

Palm Valley & Palm Court

Price List & Payment Plan

Palm Court

Floor Plan	2 Bhk-910 Sq Ft.	3Bhk-1325 Sq Ft.
BSP Front Unit	22,45,000/-	30,45,000/-
BSP Back Unit	21,85,000/-	29,45,000/-

Tower Included in this (All towers of Palm Court, Tower 1 Palm Valley & R & R New Tower)

Palm Valley Phase – 2

Floor Plan	1 Bhk - 550 Sq Ft.	2 Bhk-855 Sq Ft.	3Bhk-1325 Sq Ft.
BSP	13,95,000/-	20,45,000/-	28,95,000/-

Tower Included in this (Phase -2, R & R Old Tower, BBS, Village, Balaji, Aashiyana)

PLC Floor Wise	LGF	UGF	1 st Floor	2 nd Floor	3 rd Floor	4 th Floor
PLC	90,000/-	75,000/-	60,000/-	45,000/-	30,000/-	Nil

Other Charges	Amount	Special Offerings with Each Flat
Meter Charges	30,000/-	<ul style="list-style-type: none"> Fan & LED Light in Every Room. Semi Modular Kitchen with RO & Chimney. Cupboard in One Bedroom. Texture Paint/Wallpaper in Drawing Room.
Road, Corner & Park Facing	60,000/-	
Car Parking	Included	
GST Charges	Included	

Payment Plan

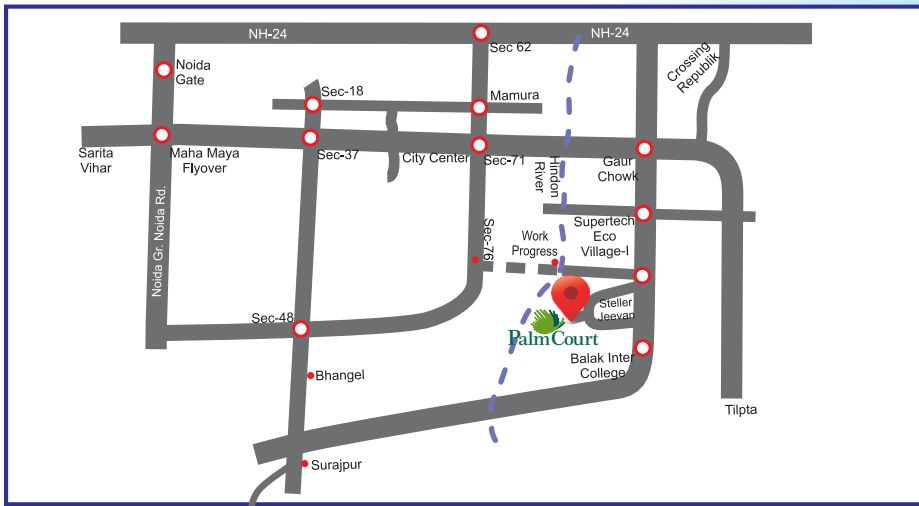
Duration	Amount
On Booking	10% of Total Amount
Within 30 days of Booking	10% of Total Amount
On Offer of Possession	80% of Total Amount + Meter Charges

This Payment Plan is mandatory for Ready to move units, where we are offering possession within 30 to 90 days.

Note:

- The Price list can be changed anytime without any prior notice but the prices at the time of booking are escalation free.
- The registration charges, stamp duty, legal documentation charges and any other govt. levies are in addition to the aforesaid Price and shall be payable at the time of offer of possession.
- The super areas include the covered area plus the proportionate area under common corridors, passages, staircase, munties, projections, water tanks etc.
- Timely Payment of the installments is the essence of the agreement. For any delay in payment an interest @ 18% shall be charged.
- The other terms and conditions of sale would be as per the application form and standard agreement to sell of the builder.

MAP



LOCATION ADVANTAGE:

- Walking distance from Stellar Jeevan.
- 5 Mins drive from Petrol & CNG Pump.
- 5 Mins drive from Gaur Chowk.
- 7 Mins drive from Metro Station (Sec. -76, Noida)
- 10 Mins drive from Metro Station (Sec.-52, Noida)
- 10 Mins drive from NH-24
- 15 Mins drive from NH-91
- 18 Mins drive from Yamuna Expressway
- 20 Mins drive from Eastern Peripheral Expressway

NEAR BY AMENITIES:

Schools:

- Kidzee , Bachpan, Footprints (Play School)
- Maple Bear Canadian (Play School), Aster Public School
- Ryan International School, St. John's Senior Secondary School

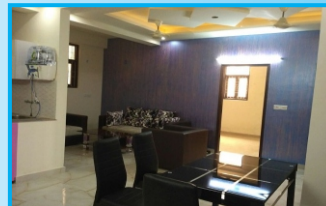
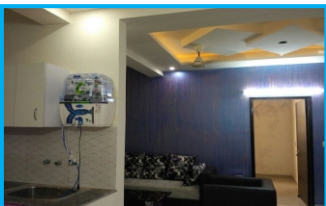
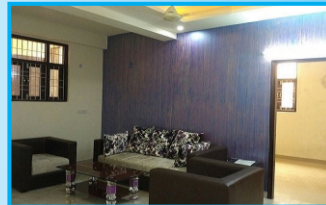
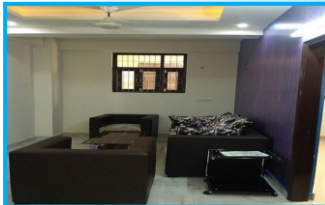
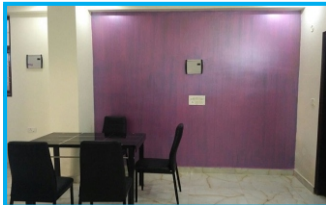
Shopping Arcade:

- Gaur City Plaza, Aarza Square
- PVR 9 Screens Multiplex

Hospitals:

- Yatharth Hospital, Fortis Health Care

ACTUAL IMAGE:



The  **Palm Valley**
Residential Flats

 **Palm Court**
LUXURY LIVING AT AFFORDABLE PRICE

Office: Palm Court, Behind Stellar Jeevan,
Sector-1, Greater Noida (West), U.P.