

Welcome to
Supertech



About Us



- **Supertech Limited**, India's leading real estate developer was founded 35 years back in National Capital Region and since then has been scaling new heights by each passing day. The company has set new trends of architectural finesse in the contemporary global scenario touching the horizons of excellence. Established under the dynamic leadership of Mr. R. K. Arora, Supertech has led to creation of various landmark projects. In Northern Region, Supertech has a major presence in Delhi- NCR, Uttrakhand, Uttar Pradesh and Haryana and Bengaluru.

Milestones

- Projects across 50 plus locations
- More than 60,000 satisfied customers
- Projects worth INR 500 billion in progress
- More than 80,000 units and 120 million sq. ft. of Real Estate under development
- Over 35 years of delivering world class projects in Residential, Retail, Hospitality IT Parks, Education and Corporate Spaces
- More than 40,000 units delivered having overall area of 40 million sq. ft.
- 16,000 units successfully delivered during FY 2014-15 & 2015-16.
- 12,000 units successfully delivered in FY 2016-17.
- Company's foray into real estate and construction industry led to the creation of various landmark real estate projects - Crossings Republik, Emerald Court, Avant-Garde, Shopprix Mall are few examples.
- Supertech has crafted architectural masterpieces like Emerald Court at Sector 93, NOIDA, high end residential project with 7 star living facilities and a 7,00,000 square feet commercial hub at 34 Pavilion, Sector-34 NOIDA and Uttarakhand's largest mall-The Pentagon Mall in Haridwar.
- Supertech has tied up with international hotel chains to set up 5-star hotels at Rudrapur, Haridwar, Meerut and NOIDA.



Welcome To Yamuna Expressway

The Destination Of Future

ABOUT YAMUNA EXPRESSWAY



Yamuna Expressway stretching 165 kms. connects international tourist destinations of Delhi and Agra. Yamuna Expressway, a 6-lane (extendable to 8 lane) access-controlled Expressway, is planned to have 5 LFDs (Land of concessionaire) with facilities of 4 Toll Plazas, and 6 Interchanges along the entire length.

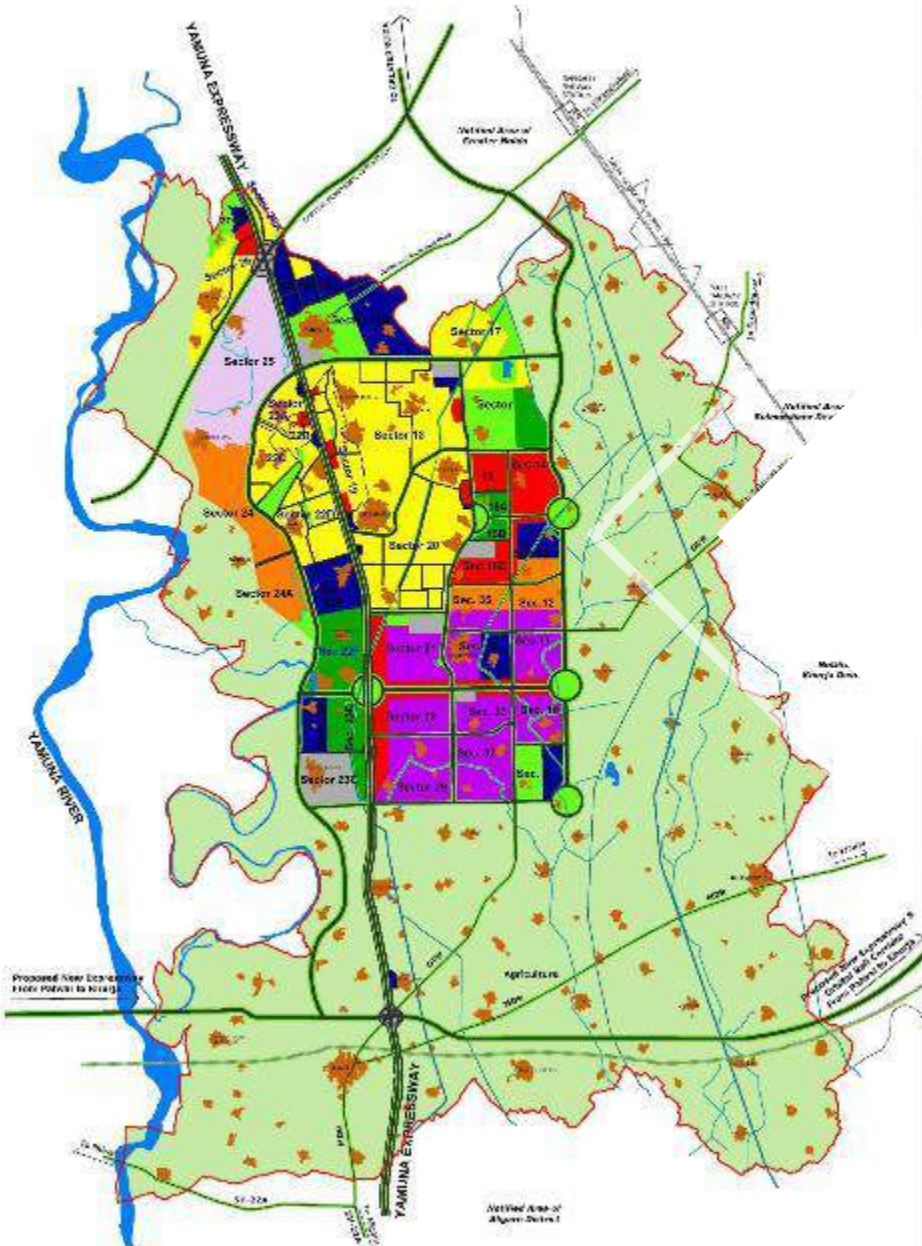


YEIDA notified area covers approx. 2,689 sq. kms. falling in six districts to be developed in two phases

MASTER PLAN FOR YAMUNA EXPRESSWAY INDUSTRIAL DEVELOPMENT AREA (PHASE - I) - 2021
(For Notified Area of GautamBudh Nagar & Bulandshahr District)

LEGEND:-

- RESIDENTIAL
- COMMERCIAL
- INDUSTRIAL
- INSTITUTIONAL
- MIXED USE
- SOZ / SPORTS CITY
- TRANSPORTATION (except for Road)
- GREENBELTS & RECREATION
- AGRICULTURE
- WATER BODIES
- VILLAGE HEADS

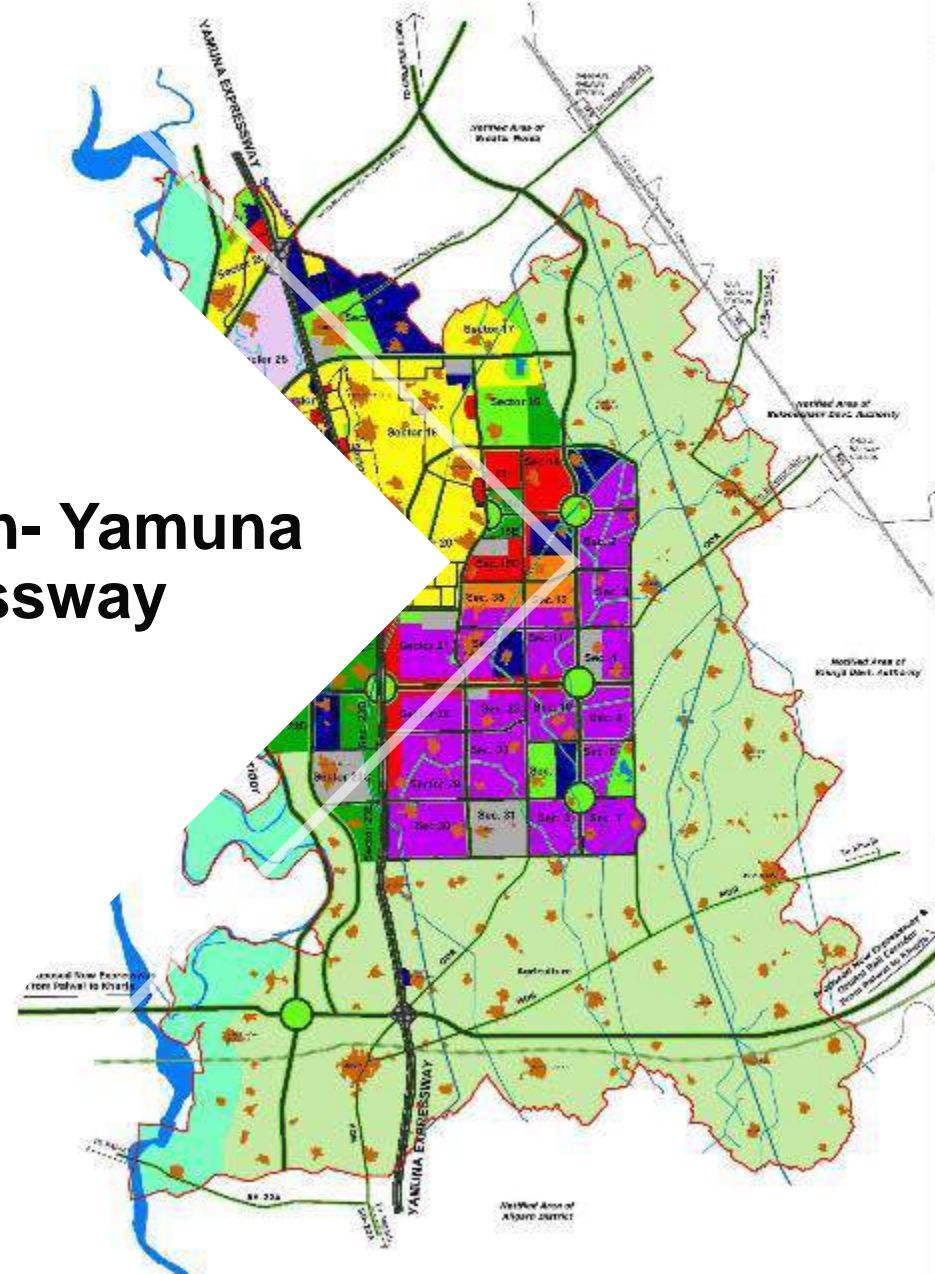


Master Plan- Yamuna Expressway

MASTER PLAN FOR YAMUNA EXPRESSWAY INDUSTRIAL DEVELOPMENT AREA (PHASE - I) - 2031
(For Notified Area of GautamBudh Nagar & Bulandshahr District)

LEGEND:-

- RESIDENTIAL
- COMMERCIAL
- INDUSTRIAL
- INSTITUTIONAL
- MIXED USE
- SOZ / SPORTS CITY
- TRANSITIONAL (including city level transport facilities)
- RIVER FRONT DEVELOPMENT
- GREENBELTS & PARKS
- RECREATIONAL GREENS
- AGRICULTURE
- WATER BODIES
- VILLAGE HEADS
- RAILWAY STATION
- LOCATION FOR GRADE SEPARATOR
- ROAD NETWORK
- CANAL WITH GREEN BELT
- RAILWAY TRACK
- NOTIFIED AREA BOUNDARY



APPROVED BY BOARD OF CHIEF ENGINEERS, GATEWAY TO INDIA
DATE: 15.08.2010

SWOT ANALYSIS

S.No.		Gurgaon	Noida	Yamuna Expressway
1	Strength	Gurgaon is also located close to Delhi (about 32 kms) from South-West Delhi. Gurgaon and Greater Gurgaon are becoming one of the preferred luxury destinations in India. Gurgaon has more than 500 Fortune listed companies near to International Airport and Railway Station & Metro Connectivity .	Noida, located close to Delhi, incorporates both industry (hub of automobile ancillary industry and IT/ITeS) and residential development with advanced infrastructural facilities and landscaped green belts. Shopping Malls , Film City, Key IT Parks and SEZ	Proposed World Class Infrastructure with India Largest International Airport with Cargo and Domestic facility, Railway with Cargo Facilities connecting via DMIC and other states and World class Universities and Metro Connectivity. Night Safari.F1 Circuit, SEZ
2	Weakness	Gurgaon has seen haphazard development. It was a private company that gave shape to the city. Gurgaon has one of the unplanned physical and social infrastructure in the country.	Noida witnessed maximum number of residential unit launches in the country in the last decade and prices have become sky-high. There is an oversupply of office space and therefore the rents in this submarket are unable to appreciate in recent times. Oversupply situation in commercial real estate market is in state of saturation .	As compared to other cities, Its a newer city in development which is better designed and well developed but it will take some time to grow as big as its other two relative city
3	Opportunities	Rapid metro is likely to improve connectivity and transport system in Gurgaon. Greater Gurgaon has immense potential to develop and avoid the mistakes that Gurgaon made. Physical and social infrastructure has to keep pace with population growth.	Noida City Center is being developed on a 99 hectare plot, with facilities like big offices, cultural centres, multiplexes, five star hotels, residential blocks and much more. Noida also has an 18-hole Golf Course of International Standards.	World Class India's Largest Airport. Metro connectivity and Interstate Connectivity. World Class Universities Railway Cargo and Public
4	Threat	High property prices is eventually leading to the city being only a luxury market. Land availability is now reaching saturation level for new developments and big projects in the area and new developments are possible towards Greater Gurgaon only. Most of the projects are expected to get launched along the Sohna Road and Golf Course Extension.	.Land availability is now reaching saturation level for new developments and big projects. New developments are now possible towards Greater Noida only. Most projects are expected to get launched along the Noida–Greater Noida Expressway and beyond, on the Yamuna Expressway.	Various land acquisition related issues and disputes have hit many projects earlier hope such unforeseen issues don't happen in future

SWOT ANALYSIS INTERPRETATION

KEY DIFFERENCES:

- Noida, Greater Noida and Yamuna Expressway has a better planned infrastructure in comparison to that of Gurgaon where liveability is still a major concern in many areas.
- Minimum road width in Noida's industrial sectors is 80 feet as against just 45 feet in Gurgaon.
- Noida, Greater Noida and Yamuna Expressway has better water and electricity supply system with most of its electricity supply being privatized. On the contrary, condition of power supply in Gurgaon is dependent upon Haryana State Electricity Board which in itself is not so productive/efficient.
- Physical infrastructure in Noida, Greater Noida and Yamuna Expressway is followed by real estate development including commercial and residential. While in Gurgaon, it is just the reverse. Infrastructure is developed only after the real estate potential of an area has been almost fully exploited.
- No polluting industry is permitted in Noida, Greater Noida and Yamuna Expressway
- Wide and better roads, public transport connectivity in each part of Noida, low cost of living, better connectivity through expressways, large green landscape areas, environmental friendly policies, and other related lifestyle facilities in Noida gives it an edge over Gurgaon.
- Education: For children schools, Gurgaon has more and better established international schools than Noida but Yamuna Expressway has world Class Universities better than Gurgaon
- UP as a state is too large and Noida is among the other many cities including Ghaziabad, Lucknow, Kanpur, among others. Whereas Haryana is smaller and Gurgaon is probably the only cash cow. Hence, the latter has always had and will continue to have better Government focus than Noida.

CONCLUSION:

On the other hand, the region around Noida-Greater Noida Yamuna Expressway will be a good investment option with relatively low ticket size. Gurgaon remains largely driven by investors while Noida is more end-users driven and more affordable for mid-segment buyers. Though it has been observed that Gurgaon has seen higher appreciation in property values than that of Noida, what favours investors entering the latter are the entry-level price points which have more scope for appreciation and return on investments. Gurgaon continues to be favoured by buyers in the premium segment

Yamuna Expressway Authority planning to set up solar plants on unused land

While the board of YEIDA gave its approval for the project, it will be set in motion only after the final nod from the government, officials said. The board also gave its go-ahead for several other sops for the public.

TNN • January 04, 2017, 07:56 IST



NOIDA: The Yamuna Expressway Industrial development Authority (YEIDA), in its board meeting on Tuesday, sought permission from the Uttar Pradesh government to set up solar plants across 100 hectares of unused land.

While the board of YEIDA gave its approval for the

project, it will be set in motion only after the final nod from the government, officials said. The board also gave its go-ahead for several other sops for the public.

YEIDA, GNIDA Pushes for environment-friendly Buildings

Noida authority and the state government has become increasingly conscious about environment protection and are carrying out strict reforms to make their region green and clean. In a similar effort, Gautam Budh Nagar's District Magistrate, N.P. Singh recently wrote to New Okhla Industrial Development Authority, Greater Noida Industrial Development Authority (GNIDA) and Yamuna Expressway Industrial Development Authority (YEIDA) to mandate developers in their region to strictly follow environment-friendly construction.





'फिल्म नगरी' की तैयारियां जोरों पर

**जरूरी
औपचारिकताएं
जल्दी पूरी करने का
निर्देश**



घेटर नोएडा

abpganga.com



फिल्म सिटी से जुड़ी अहम खबर

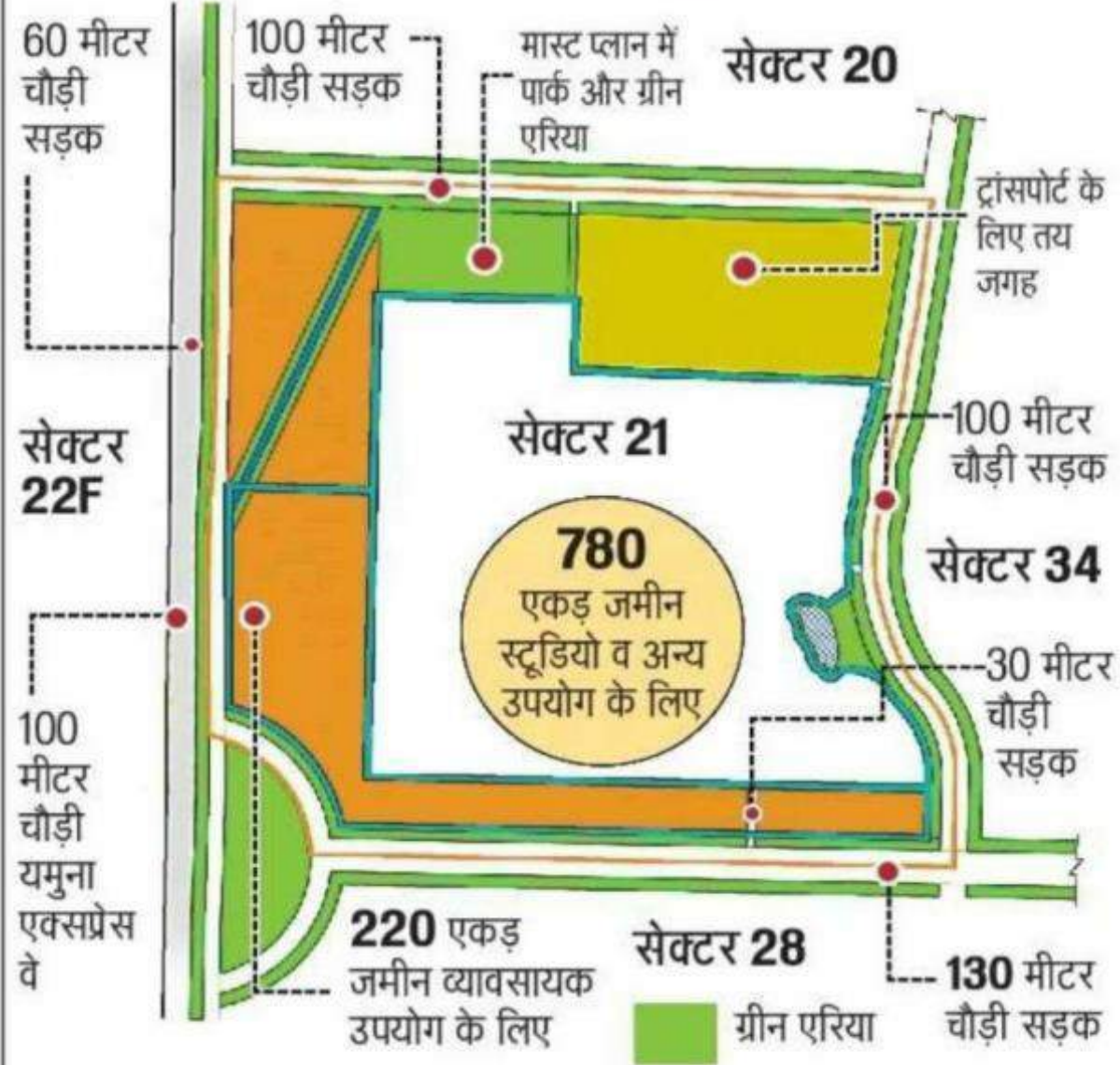


03:56

▲ कस्टम ने 10 लाख से ज्यादा

लखनऊ

ऐसी होगी अपनी फिल्म सिटी



FILM CITY

Yogi Sarkar has given 1000 acres of land for Film City, this is the complete project

In a review meeting with state officials through video conferencing, CM Yogi had announced to make the country's largest and beautiful film city in UP.



"The Yamuna Expressway authority sent the proposal to the state government for a film city in an area of 1,000-acre land in Sector 21," Yamuna Expressway official Shailendra Bhatia said.

According to the presentation, the film city would come up in Sector 21 along the Yamuna Expressway and, of the total 1,000 acres, 220 acres would be reserved for commercial activity.

He said the identified land stands out for the project as it would be close to the upcoming international airport in Jewar and has good road connectivity as well.

Jewar Airport	6 KM
Eastern Peripheral Expressway	12 KM
DELHI	70 KM
AGRA	150 KM

Filmi NEWS-

According to Chief Minister, Yogi Adityanath, Idea behind the project is to make it the best **Dedicated Infotainment Zone of the country**. He said his government was well aware of the present trend of OTT and Media Streaming Platforms and hence the high capacity world-class data center along with all pre-production and the post-production infrastructure, processing labs, VFX, and digital technology of international level would be provided in this zone.

- Art director Nitin Desai offered to set up an entire Film City on the lines of what he had done in Mumbai. He was of the opinion that about 80 per cent of technicians and workforce in Mumbai film industry was from UP and after the industry in UP itself, the availability of manpower would never be a problem.
- Welcoming the proposal, Paresh Rawal, chairman, National School of Drama, suggested that the Film City should have a facility to train scriptwriters as it would rejuvenate the regional film industry.
- Actor Manoj Joshi felt that the Film City would not only create jobs for the youth of this region but would also add a new dimension to the tourism industry of UP. Almost all those who attended the meeting offered their support and contribution in making the project a success.
- Sandeep Singh of Vistas Media, a Singapore based Company, offered to set up a Film Academy with an initial investment of 10 million dollars.

FILM CITY TO BOOST PROPERTY PRICES



The proposed film city, which will be developed near the proposed Jewar International Airport, is expected to boost property prices in Noida, Greater Noida and Yamuna Expressway . According to the state government presentation, 1,000 acres of land has been identified and the site is located in Sector 21 along the Yamuna Expressway in Gautam Budh Nagar.

According to Shri R K Arora, Chairman, Supertech Group, the proposed development of Film City Project is expected to create large scale job opportunities directly and indirectly, which would eliminate the present sluggishness in demand and property transactions due to the impact of COVID-19 and the lock down. Once the entire infrastructure planned for the area is in place, this location would surpass major cities like Mumbai, Pune & Ahmedabad.

Mr. Arora added that it is ideal time for the investors to invest in properties in these locations as with the developments under planning by different agencies, there can be only appreciation for properties in the days to come.



FILM CITY TO BOOST PROPERTY PRICES

The proposed Film City is likely to boost investment sentiments across Uttar Pradesh, particularly in areas adjoining Noida, Greater Noida and Yamuna Expressway.

“This bodes well for the real estate sector and it is likely to have a positive impact on demand for both residential as well as commercial properties. Along with upcoming Jewar Airport, the proposed Film City is expected to provide a new lease of life to existing projects and will boost new project offerings immensely,” said Dhruv Agarwala, Group CEO, Housing.com



Growth Drivers YAMUNA EXPRESSWAY



CONNECTIVITY & INFRASTRUCTURE



EDUCATIONAL INSTITUTES



INDUSTRY



RECREATION

Connectivity & Infrastructure



Jewar International Airport Connectivity



Metro Connectivity



Railway Connectivity



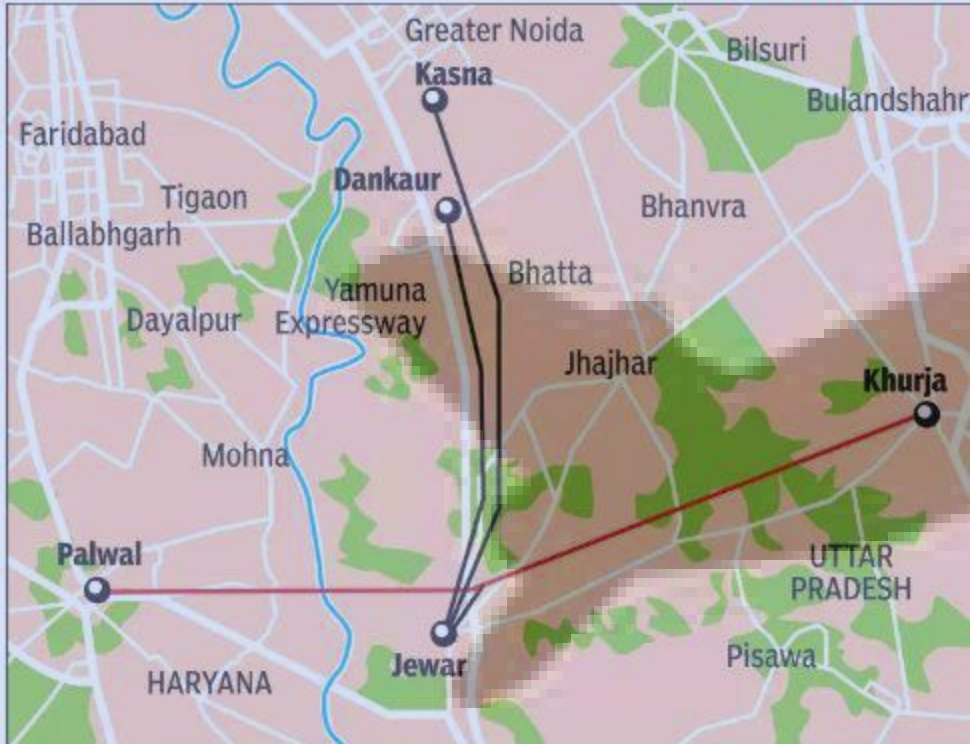
Monorail Connectivity



Road Connectivity

JEWAR INTERNATIONAL AIRPORT

MORE CONNECTIVITY TO AIRPORT



3 routes proposed: From Jewar airport to intersection of Palwal-Khurj & Yamuna e-way, from Jewar to Kasna, and from Jewar to Dankaur

- Jewar Airport -World 4th Largest International Airport 5100 Hectares (12355 Acres) having 6 Runways at present with Passenger as well as Cargo facilities and 4 times bigger than IGI Airport. Cargo & Passenger would be proposed operational by 2022 and 2023 respectively.
- There is a proposal to increase the runways from 6 to 8 after addition of two more runways. The Jewar Airport would be the largest airport in the world in terms of Runways.
- With six runways, it will be India's largest and among the world's largest airports. Only the O'Hare International Airport and the Dallas/Fort Worth International Airport are larger, with eight and seven runways respectively. Other existing airports with six runways are Amsterdam Airport Schiphol, Detroit Metropolitan Airport, Logan International Airport, Boston and Denver International Airport. As of September 2019, the Indira Gandhi International Airport has the highest number of runways in India, three.
- The airport, expected to be completed by 2022, will be able to handle 5 million passengers per annum (MPA) initially and up to 60 MPA after expansion over 30 years.

Location of JEWAR AIRPORT



Noida: Jewar Airport to be ready in 4 phase, first flight to be filled in 2024

Published on: 07 Oct 2020, 03:55 pm IST | Updated on: 07 Oct 2020, 10:52 pm IST



रनवे नंबर 1 से 2024 में शुरू होगी उड़ान

जेवर के हवाई अड्डे पर नहीं होगा कार्बन का उत्सर्जन, डिजिटल सुविधाओं से होगा लैस

Shyam.Vir
@amesgroup.com

■ **ग्रेनो :** जेवर में बनने वाले एयरपोर्ट से 2024 में एक रनवे से जहाज उड़ान भरने लगेगा। यह हवाई अड्डा पर्यावरण का दोस्त होगा। यह पूरी तरह डिजिटल रूप में संचालित होगा। डिजिटल सुविधाएं होंगी। सुरक्षा और कॉन्टैक्ट लेस यात्रा की सुविधा मिलेगी। इसे बनाने के लिए यमुना अथॉरिटी के टास्कर में बुधवार को ज्यूरिख इंटरनेशनल एजी और नोएडा इंटरनेशनल एयरपोर्ट लिमिटेड (नियाल) के बीच कंसेशन अग्रिमेंट हो गया। इस करार पर हस्ताक्षर होने के साथ ही ज्यूरिख को एयरपोर्ट बनाने का अधिकार मिल गया।

जेवर का एयरपोर्ट अपनी श्रेणी का पहला नेट जीरो एमिशन एयरपोर्ट बनेगा। इसमें कार्बन उत्सर्जन नहीं होगा। इससे पर्यावरण को नुकसान नहीं पहुंचेगा। असल में साल 2015 में पेरिस में जलवायु सम्मेलन हुआ था। उसमें 2050 को लक्ष्य बनाते हुए जीवाश्म ईंधन को वजह से हो रहे कार्बन उत्सर्जन को कम करना है। अधिकारियों ने कहा है कि इस श्रेणी में ये एयरपोर्ट एंजिन के क्षेत्र में नए मापदंड स्थापित करेगा।

देश में और अवसर देख रही स्विस् कंपनी

करार पर हस्ताक्षर के दौरान ज्यूरिख एयरपोर्ट इंटरनेशनल एशिया के सीईओ डेनियल बर्कर ने कहा कि कंसेशन अग्रिमेंट पर हस्ताक्षर एयरपोर्ट के विकास में एक बहुत बड़ी उपलब्धि है। साल 2024 में इसके पहले चरण का काम पूरा कर दिया जाएगा। एक रनवे के साथ 12 मिलियन यात्रियों की क्षमता के साथ उड़ान शुरू की जाएगी। यूपी व केंद्र सरकार के साथ साझेदारी में ज्यूरिख इन एयरपोर्ट को भारतीय वायु परिवहन का एक महत्वपूर्ण हिस्सा बनाएगा। यात्रियों और लॉजिस्टिक के लिए बेहतरीन सुविधा मिलेगी। इसके साथ ही उन्हें उम्मीद है कि इस एयरपोर्ट के निर्माण के साथ ही उन्हें भारत के एंजिन उद्योग के विकास में निवेश और भाग लेने के अवसर मिलेंगे।



जेवर में एयरपोर्ट बनाने के लिए ज्यूरिख इंटरनेशनल और नियाल के बीच बुधवार को कंसेशन अग्रिमेंट हुआ

कनेक्टिविटी के लिए तैयार होगा प्रस्ताव

एयरपोर्ट निर्माण का रास्ता साफ होने के साथ ही यहां अन्य विश्व स्तरीय सुविधाएं भी शुरू होंगी। अब इन पर काम शुरू किया जाएगा। जेवर में प्रस्तावित एयरपोर्ट से दिल्ली 70, नोएडा 40 और आगरा 130 किलोमीटर की दूरी पर है। इंस्टर्न पैरिफेरल एक्सप्रेसवे से गुडगांव और फरीदाबाद को कनेक्ट किया जाएगा। मेट्रो, पीआरटी और बुलेट ट्रेन (दिल्ली से चारणसी) से भी कनेक्टिविटी होगी। पलवल-खुर्जा एक्सप्रेसवे और इसके साथ ही 100 मीटर की पैरलल सड़क भी बनेगी।

2021 में एयरपोर्ट का निर्माण कार्य शुरू होगा

'हर मंडल में एयरपोर्ट की तैयारी'

■ **बिस, ग्रेनो :** प्रदेश सरकार हर मंडल में कम से कम एक एयरपोर्ट बनवाने की तैयारी में है। इसके लिए एंजिन सेक्टर पर फोकस बढ़ाया गया है। अयोध्या और मेरठ समेत कई शहरों में एयरपोर्ट के लिए जमीन खरीदी जा रही है। नागरिक उड्डयन विभाग के डायरेक्टर सुरेंद्र सिंह ने कहा है कि लखनऊ, चारणसी, कानपुर, गोरखपुर, आगरा, प्रयागराज व गाजियाबाद के हिंडन में एयरपोर्ट संचालित हैं। कुशीनगर को अंतरराष्ट्रीय एयरपोर्ट का दर्जा मिल चुका है। इसी महाने यहां से श्रीलंका के लिए उड़ान शुरू हो जाएगी। मेरठ, अलीगढ़, आजमगढ़, मुरादाबाद, श्रावस्ती, चित्रकूट, ललितपुर, झांसी, सोनभद्र, महारनपुर, झांसी, गाजीपुर, बरेली आदि में एयरपोर्ट बनाए जाएंगे। अयोध्या में एयरपोर्ट के लिए 200 एकड़ और मेरठ में 26 हेक्टेयर जमीन खरीदी गई है। झांसी एयरपोर्ट के लिए सैद्धांतिक सहमति मिल गई है।



कोरोना की वजह से हुई देर, अब तक शुरू हो जाता काम

■ **बिस, ग्रेनो :** अगर कोरोना संक्रमण नहीं होता तो अब तक जेवर एयरपोर्ट परियोजना पर काम शुरू हो जाता। ज्यूरिख एयरपोर्ट इंटरनेशनल एशिया के सीईओ डेनियल बर्कर ने समारोह के दौरान ऑनलाइन बातचीत में कहा है कि कोरोना वायरस संक्रमण के कारण करार की प्रक्रिया पूरी करने में 6 महीने का ज्यादा वक़्त लग गया। तैयारी है कि 2021 की शुरुआत में इसका निर्माण कार्य शुरू कर दिया जाए। ज्यूरिख के अधिकारियों की माने तो निर्माण कार्य में स्थानीय कंस्ट्रक्शन पार्टनर का साथ लिया जाएगा। वह पहले चरण में 4500 करोड़ के निवेश की उम्मीद कर रहे हैं। 1334 हेक्टेयर जमीन को डिवेलप किया जाएगा। एयरपोर्ट के सिटी साइड एरिया में 74 हेक्टेयर जमीन पर विकास होगा। एयरपोर्ट की जमीन पर मेट्रो स्टेशन भी बनेगा। अधिकारियों ने कहा है कि पहला रनवे से उड़ान शुरू होने के बाद 90 प्रतिशत घरेलू यात्री मिलेंगे। वह यात्रियों को कॉन्टैक्टलेस सर्विस देने की योजना बना रहे हैं। यात्रियों को एक फ्लाइट से दूसरी को पकड़ने के समय को भी कम करने पर फोकस किया जाएगा। इससे यात्रियों को बेहतर सुविधा मिलेगी।

7 गुना बढ़ेंगी आर्थिक गतिविधियां

सीईओ डॉ. अरुणवीर सिंह ने कहा है कि 1334 हेक्टेयर में जमीन पर पहले चरण में काम शुरू होगा। कुल 4 चरणों में काम होगा। परियोजना के कारण करीब 7 गुना आर्थिक गतिविधि बढ़ जाएगी। बिल्डिंग्स की संख्या यूरोप में नैरेडको के प्रेसिडेंट एवं सुपरटेक ग्रुप के चेयरमैन आरके अरोड़ा ने कहा है कि एयरपोर्ट के कारण यहां के रियल एस्टेट क्षेत्र में भी बूम आएगा। यहां धरो की मांग बढ़ेगी। साथ ही सुविधाएं भी बढ़ेंगी।

तीनों अथॉरिटी और प्रदेश को मालामाल करेगा हवाई अड्डा

■ **बिस, ग्रेनो :** जेवर में बनने वाला यह एयरपोर्ट जिले की तीनों अथॉरिटी और प्रदेश सरकार के खजाने को मालामाल कर देगा। अधिकारियों की उम्मीद है कि इससे क्षेत्र में औद्योगिक निवेश और अधिक बढ़ेगा। इससे निवेशकों के लिए जेवर और पूर्वी बेस्ट डेस्टिनेशन बन जाएगा। यूपी के नागरिक उड्डयन विभाग एवं मुख्यमंत्री के अपर मुख्य सचिव एसपी गोयल ने बुधवार को कंसेशन अग्रिमेंट के दौरान इस परियोजना को आर्थिक मजबूती के लिए मील का पत्थर बताया है। निविदा शर्तों के मुताबिक, छह साल तक कंपनी लाभार्थी नहीं देगी। सातवें साल से सरकार को राजस्व मिलने लगेगा। तकनीकी आर्थिक फिजिविलिटी रिपोर्ट के अनुसार सातवें साल में नियाल को इससे 1.06 लाख करोड़



रुपये का राजस्व मिल सकता है। एसपी गोयल ने कहा कि इस एयरपोर्ट के निर्माण से राज्य में नौकरियां पैदा होंगी और आर्थिक स्थिति में सुधार होगा। आने वाले समय में घरेलू व ग्लोबल निवेशकों के लिए यह राज्य सबसे चहेंता डेस्टिनेशन बन जाएगा। सरकार इस परियोजना को पूरा करने के लिए ज्यूरिख की टीम का पूरा सहयोग करेगी।

हवाई यात्रा से जुड़ेगा वेस्ट यूपी

नियाल एवं यमुना अथॉरिटी के सीईओ डॉ. अरुणवीर सिंह ने कहा है कि यह विश्व स्तरीय एयरपोर्ट वेस्ट यूपी को घरेलू और इंटरनेशनल स्थानों से जोड़ देगा। साथ



ही दिल्ली-एनसीआर क्षेत्र में हवाई यात्रा की क्षमता बढ़ जाएगी। बुधवार को हुए अग्रिमेंट समारोह के दौरान नागरिक उड्डयन विभाग के डायरेक्टर सुरेंद्र सिंह, नोएडा की सीईओ रितु माहेश्वरी, ग्रेनो के सीईओ नरेंद्र भूषण, नियाल के नोडल ऑफिसर शैलेन्द्र पाटिया, चीफ ऑपरेटिंग ऑफिसर किरन के जैन, लीगल हेड रोहित गुप्ता आदि मौजूद रहे।

अडानी को पछाड़ कर लिया था कॉन्टैक्ट

ज्यूरिख ने अडानी जैसे दावेदारों को पछाड़ कर ये कॉन्टैक्ट हासिल किया है। अडानी इंटरनैशनल एयरपोर्ट लिमिटेड (डायल) ने 351 रुपये और एनकोर्न इंफ्रस्ट्रक्चर इनवेस्टमेंट होल्डिंग लिमिटेड ने 205 रुपये प्रति यात्री राजस्व देने का प्रस्ताव दिया था। 400.97 रुपये प्रति यात्री राजस्व देने का प्रस्ताव देकर ज्यूरिख ने 29 नवंबर 2019 को ये कॉन्टैक्ट पा लिया। ये कंपनी एयरपोर्ट के निर्माण पर 29560 करोड़ रुपये खर्च करेगी।



जेवर एयरपोर्ट : हाईवे और रेलमार्ग दोनों नजदीक

1334 हेक्टेयर जमीन पर पहला चरण पूरा होगा

5000 हेक्टेयर जमीन पूरी परियोजना के लिए आरक्षित है

1.2 करोड़ सालाना यात्रियों के साथ वर्ष 2024 में शुरू होगा जेवर एयरपोर्ट

टॉय सिटी

एयरपोर्ट से 1 किलोमीटर दूर स्थित सेक्टर-32 में टॉय सिटी बसाई जाएगी। करीब 100 उद्यमियों ने इकाई लगाने के लिए आवेदन किया है। 9 अक्टूबर को इनका आवंटन किया जाएगा। खिलौना उद्योग में चीन पर निर्भरता खत्म करने के लिए यह योजना शुरू की गई है।

अपैरल-हैंडीक्राफ्ट पार्क

यमुना प्राधिकरण के सेक्टर-29 में ये पार्क विकसित किए जाएंगे। 9 अक्टूबर को तीनों पार्क में भूखंड आवंटित किए जाएंगे। एयरपोर्ट से करीब तीन किलोमीटर दूर बसने वाले तीनों पार्कों के लिए 8 हजार से अधिक उद्यमियों ने आवेदन किया है। इसकी तैयारी पूरी हो गई है।

फिल्म सिटी

एयरपोर्ट से छह किलोमीटर दूर, प्रदेश सरकार के प्रस्ताव के बाद प्राधिकरण ने सेक्टर-21 में फिल्म सिटी बसाने की तैयारी की है। 1000 एकड़ जमीन में फिल्म सिटी बसाई जाएगी। फिल्म सिटी एयरपोर्ट से छह किलोमीटर दूर है। इसकी डीपीआर बनवाने के लिए कंसलटेंट के चयन की प्रक्रिया चल रही है।

मेडिकल डिवाइस पार्क भी नजदीक

यह सेक्टर एयरपोर्ट से करीब 4 किलोमीटर दूर है। यमुना प्राधिकरण के सेक्टर-28 में मेडिकल डिवाइस पार्क विकसित किया जाएगा। केंद्र सरकार की इस योजना के लिए 250 एकड़ जमीन तय कर दी गई है। प्रदेश सरकार ने इस प्रस्ताव को केंद्र को भेज दिया है। इसकी डिटेल्ड प्रोजेक्ट रिपोर्ट बनवाई जा रही है।



ताजमहल
मथुरा
कागर्गा हब
रेल लिंक
दिल्ली हावड़ा रेल लाइन

यमुना एक्सप्रेस वे
जेवर एयरपोर्ट

पतंजलि
होटल

बीआईसी
अल्ट्रो पीआरटी
जेवर मेट्रो

नेशनल हाईवे

ईस्टर्न पेरिफेरल एक्सप्रेस वे
रिंग रेलवे

इन गांवों की जमीन पर एयरपोर्ट बनेगा

रोही, पारोही, दयानतपुर, बनवारीवास, किशोरपुर, रनहेरा

नेशनल हाईवे
गंगा एक्सप्रेस वे

किसने कितनी बोली लगाई

ज्यूरिख एयरपोर्ट इंटरनेशनल एजी	400.97 रुपये
अडाणी एंटरप्राइजेज	360 रुपये
डायल	351 रुपये
एंकरेज इंफ्रास्ट्रक्चर	205 रुपये

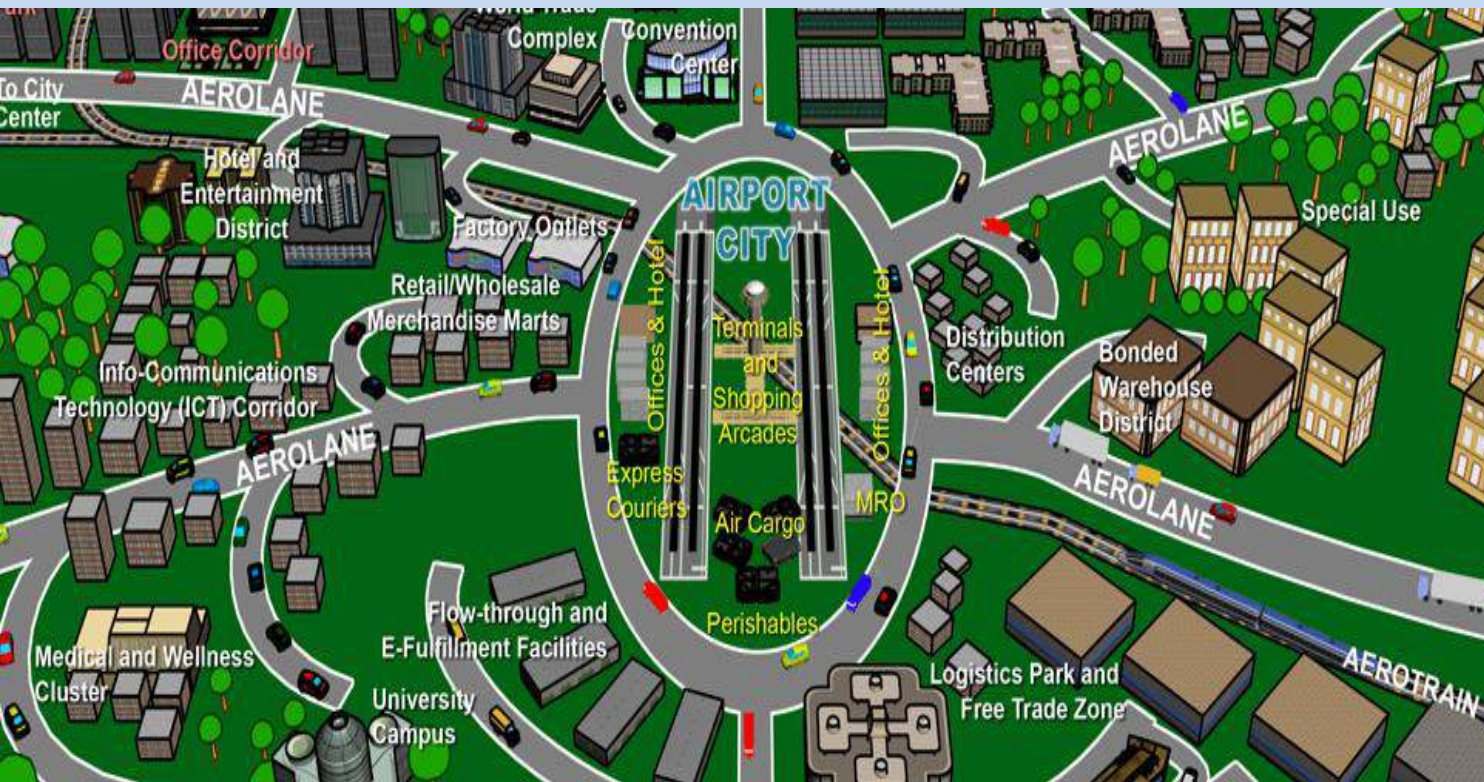
(प्रति यात्री देंगे सरकार को)

ग्राफिक्स : भूपेन मंडल

Gautam Buddha Nagar will become country's first aerotropolis, this achievement will be achieved by Jewar Airport, know what is aerotropolis

Updated Oct 18, 2020 06:19:33 IST | Anika Gupta

As the Jewar Airport project progresses, the achievements in Gautam Buddha Nagar's account are increasing with it. Now Gautam Budh Nagar due to Jewar International Airport



An **Aerotropolis** is a metropolitan subregion whose infrastructure, land use, and economy are centered on an airport. It fuses the terms "aero-" (aviation) and "metropolis". Like the traditional metropolis made up of a central city core and its outlying commuter-linked suburbs, the aerotropolis consists of

- 1) the airport's aeronautical, logistics, and commercial infrastructure forming a multimodal, multifunctional airport city at its core and
- 2) 2) outlying corridors and clusters of businesses and associated residential developments that feed off each other and their accessibility to the airport

DIRECT METRO FROM IGI AIRPORT TO JEWAR AIRPORT

• Present Status

- August 2018: Noida International Airport Company Limited (NIAL) formed. NIAL will handle the bidding and overall project management of the project.
- November 2018: UP Government approves allocation of INR 1260 Crores for land acquisition
- December 2018: Airport to be built under Private Public Partnership (PPP) mode.
- December 2018: District administration submits rehabilitation and resettlement (R&R) document on land acquisition.
- January 2019: Acquisition of 1334 hectare of land to start by month end.
- February 2019: In UP budget, UP govt has allocated ₹800 Cr for land acquisition to expedite work. Foundation stone to be laid in March 2019.
- March 2019: Due to land acquisition related issues, the foundation stone laying ceremony is deferred for few months
- September 2019: 707 hectares land acquired which is 57% of the requirement for 1239 hectares for phase-1 of the project. Remaining land to be acquired soon and developer for phase-1 to be finalized by November 2019.
- 29 November 2019: Contract given to Zurich Airport for developing and operating the airport for 40 years.
- 28 January 2020: Land acquisition completed for phase-1 of the project which required 1334 hectares out of total requirement of 5000 hectares. Phase-1 of the airport project to be completed by year 2023



- Zurich Airport said it will design, develop and operate the new greenfield airport in Jewar under a 40-year concession.
- It will invest 650 million Swiss francs (₹4,663.731 crore) for the first phase, which will take four years to be completed.
- The Jewar airport will be the National Capital Region's third, after the Indira Gandhi International Airport (IGIA) and Ghaziabad's Hindon. The new airport will be 100km from the GMR Group-operated Delhi airport, the capital's only international airport so far.
- The second phase of the Jewar airport is due to be completed by FY31 and will increase its capacity to 30 million passengers per year, while the third and fourth phases are due to be finished by FY36 and FY40, respectively, further enhancing its capacity to 50 million and 70 million passengers, respectively.
- The Jewar airport in Greater Noida will act as a second airport for the capital city, where, a study carried out by government said, that the existing airport is set to exhaust its capacity of over 100 million by 2023-24 – the airport in Jewar is expected to start operations around the same time.
- Industry analysts believe that with Zurich Airports becoming the owners for Jewar airport would help bring competition among airports, which currently are a monopoly. This is set to bring competition in the market and will benefit airlines.

Zurich Airport wins bid to build new Uttar Pradesh airport

6 Dec 2019 by Sanchita Nambiar

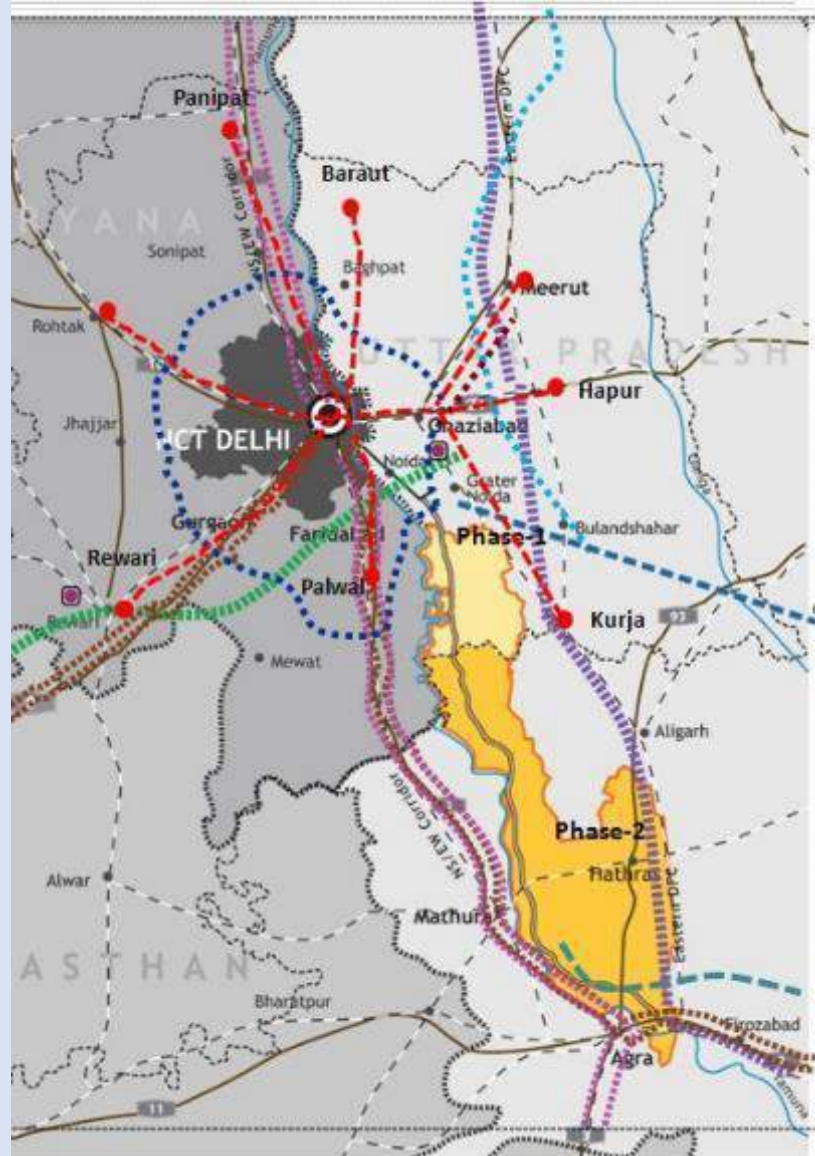


Fact File

Zurich Airport is the largest [international airport](#) of [Switzerland](#) and the [principal hub](#) of [Swiss International Air Lines](#)

In 2019, the airport received the [World Travel Award](#) in the category "Europe's leading airport" for the 17th time in a row.^[3] The [Skytrax](#) Award also ranks Zurich Airport among the top 10 airports in the world for millions of travellers each year.

PROPOSED CONNECTIVITY TO JEWAR AIRPORT



- Golden Quadrilateral
- Ganga Expressway
- RRTS
- Western DFC
- Upper Ganga Canal Expressway
- Dasna-Meerut Expressway
- Eastern DFC
- North-South corridor
- Peripheral Ring Road (Eastern & Western)
- Agra Kanpur Expressway

METRO CONNECTIVITY TILL JEWAR

Meet with DMRC on Jewar Metro link

Feasibility Study MoU To Be Inked On Monday

Raman bats for Jewar, will write to UP govt

KEY CONNECTION

38km length of proposed Metro track between Knowledge Park 2 and Jewar

2019 year by when project is expected to be commissioned

2017 Deadline for completion of Metro corridor from Noida to Greater Noida

₹2,500 estimated cost of the project

YEIDA officials said the proposed Metro track is estimated to cost Rs 2,500 crore and will be aligned along the Yamuna expressway

Greater Noida: With the civil aviation ministry clearing the proposal for a second international airport in Delhi-NCR, the chairperson of Noida, Greater Noida and YEIDA, Ramesh Raman said YEIDA, Ramesh Raman said on Friday he will soon write to the state government, pushing for Jewar in Greater Noida, as that would give the entire area the much-needed economic boost.

"I will soon write to the state government to push the project on track. Once the proposal takes wing, the entire area would receive an economic boost," Raman told TOI.

Though Noida was pushed for Jewar, which is around 100km from Delhi, as the site for an international airport, when he was the chief minister of UP, the Akhilesh Yadav government is reportedly keen on building an international airport between Agra and Mathura.

However, sources said that the international airports at Jewar has an advantage over other places under consideration in Uttar Pradesh as over 1,000 acres of land was acquired for the airport before the Akhilesh register handed the idea to

which will bring it per kilometre cost down considerably. Once we have the feasibility report and the detailed project report in place, we will take the project further," GP Singh, financial controller of YEIDA, said.

The YEIDA CEO also said that the population in Greater Noida and Yamuna expressway areas is also set to increase considerably.

"Several new housing schemes are also in the pipeline. Considering that thousands of more people will inhabit the area, in the near future, the Metro link will prove very useful. It will also serve the several proposed residential, industrial and IT units along the Yamuna expressway" he added.

DMC, Yadav said, "Once the Greater Noida-Jewar track is commissioned, it will provide connectivity between the two airports, which will prove to be boon to travellers."

YEIDA officials said the proposed Metro track is estimated to cost Rs 2,500 crore and will be aligned along the Yamuna expressway.

"The track will be laid out as it will run at road level

Greater Noida: A day after the civil aviation ministry cleared a proposal for a second international airport, likely to be built in Jewar, the Yamuna Expressway Authority and the Delhi Metro Rail Corporation, bosses, met on Friday to discuss the feasibility of a high-speed Metro link between Greater Noida and Jewar, which would in turn generate connectivity to Hill Airport in Delhi.

Ramesh Raman, the CEO of Yamuna Expressway Industrial Development Authority (YEIDA), who met Delhi Metro Rail Corporation's (DMRC) MD Manoj Singh, told TOI that both the authorities will prepare MoU in shape of a feasibility study and a detailed project report for the 38km long proposed Metro track between Knowledge Park 2 and Jewar.

"Once the agreement is inked, the feasibility report should come within three months, while the detailed project report should be in place in about five months time," Yadav said.

If all goes as per plan, the Greater Noida-Jewar Metro link could be commissioned by 2019, officials said. With the Noida-Greater Noida Metro link likely to be in place by

Greater Noida: With the civil aviation ministry clearing the proposal for a second international airport in Delhi-NCR, the chairperson of Noida, Greater Noida and YEIDA, Ramesh Raman said on Friday he will soon write to the state government, pushing for Jewar in Greater Noida, as that would give the entire area the much-needed economic boost.

"I will soon write to the state government to push the project on track. Once the proposal takes wing, the entire area would receive an economic boost," Raman told TOI.

Though Noida was pushed for Jewar, which is around 100km from Delhi, as the site for an international airport, when he was the chief minister of UP, the Akhilesh Yadav government is reportedly keen on building an international airport between Agra and Mathura.

However, sources said that the international airports at Jewar has an advantage over other places under consideration in Uttar Pradesh as over 1,000 acres of land was acquired for the airport before the Akhilesh register handed the idea to

which will bring it per kilometre cost down considerably. Once we have the feasibility report and the detailed project report in place, we will take the project further," GP Singh, financial controller of YEIDA, said.

The YEIDA CEO also said that the population in Greater Noida and Yamuna expressway areas is also set to increase considerably.

"Several new housing schemes are also in the pipeline. Considering that thousands of more people will inhabit the area, in the near future, the Metro link will prove very useful. It will also serve the several proposed residential, industrial and IT units along the Yamuna expressway" he added.

DMC, Yadav said, "Once the Greater Noida-Jewar track is commissioned, it will provide connectivity between the two airports, which will prove to be boon to travellers."

YEIDA officials said the proposed Metro track is estimated to cost Rs 2,500 crore and will be aligned along the Yamuna expressway.

"The track will be laid out as it will run at road level

Yamuna expressway authority to start work on 38-km Metro link

IT'S OFFICIAL: YEIDA, DMRC sign agreement on ₹2,000 crore project that will link G Noida and Jewar

3 dead in two separate accidents on Noida-G Noida Yamuna e-way

Chinese firm may set up business along e-way

The Metro track will be built at road level to reduce construction cost.

for building at road level.

On being asked if the Uttar Pradesh government was trying to take a populist measure ahead of the next election, he said:

Greater Noida: The Yamuna Expressway Industrial Development Authority (YEIDA) on Monday said that it has signed an agreement with the Delhi Metro Rail Corporation (DMRC) to work on a 38-kilometre-long high-speed Metro project in the local between Greater Noida and Jewar.

YEIDA and DMRC officials signed the agreement in Greater Noida to make way for further progress in the ambitious project that will connect the many villages and poorly developed areas small located along the 38 km Yamuna Expressway that runs from Greater Noida and Agra.

Today's agreement means that DMRC will now begin its technical feasibility report on the proposed high-speed Metro link. The feasibility report will be submitted to the state government. Once it will be completed, work on detailed project report (DPR) will be started," said GP Singh, finance controller of YEIDA.

DMRC officials, including assistant general manager SG [name redacted] at the

Greater Noida: The Yamuna Expressway Industrial Development Authority (YEIDA) on Monday said that it has signed an agreement with the Delhi Metro Rail Corporation (DMRC) to work on a 38-kilometre-long high-speed Metro project in the local between Greater Noida and Jewar.

YEIDA and DMRC officials signed the agreement in Greater Noida to make way for further progress in the ambitious project that will connect the many villages and poorly developed areas small located along the 38 km Yamuna Expressway that runs from Greater Noida and Agra.

Today's agreement means that DMRC will now begin its technical feasibility report on the proposed high-speed Metro link. The feasibility report will be submitted to the state government. Once it will be completed, work on detailed project report (DPR) will be started," said GP Singh, finance controller of YEIDA.

DMRC officials, including assistant general manager SG [name redacted] at the

UP Budget 2020: ₹ 2,000 Crore Allocated For Noida International Airport In Jewar

UP Budget 2020: The UP government today presented a ₹ 5,12,860.72 crore budget for FY 2020-21 in the state assembly.

Noida | Press Trust of India | Updated: February 18, 2020 3:06 pm IST

Sponsored

These Children Deserve to Sleep on a Full Stomach! (Akshaya Patra)

Sponsored Links by Taboola

Shop Salvatore Ferragamo At 60% Off | DARVEYS.com (DARVEYS)

PROMOTED



Deals on latest Made in India products

Up to 65% off **a**

TRENDING

Onam 2020: Inside Malaika Arora's Festivities With *Arundhati*



UP Budget 2020: UP government today allotted ₹ 2,000 crore for Jewar Airport (Representational)

Yamuna Expressway-NEWS HEADLINES

THE ECONOMIC TIMES News

English Edition • E-Paper

Home News Podcasts Economy Industry Politics and Nation Defence Company International Elections More

Agriculture Finance Foreign Trade Indicators Infrastructure Policy

Business News News Economy Infrastructure 69 firms allotted land near Jewar airport during pandemic, investments of over Rs 2,300 cr expected

69 firms allotted land near Jewar airport during pandemic, investments of over Rs 2,300 cr expected

PTI - Last Updated Aug 21, 2020, 06:48 PM IST

SHARE FORTNER SAVE PRINT CLEAR

Synopsis

These firms have been allotted 146.50 hectares of land during the three-month period when economic activities largely remained curtailed due to the pandemic, according to Yamuna Expressway Industrial Development Authority (YEIDA) officials.

Noida: Notwithstanding the COVID-19 outbreak, 69 firms were allotted industrial land near the upcoming **Jewar airport** between May and July, with officials expecting investments of over Rs 2,300 crore and creation of over 86,000 jobs in the region.

These firms have been allotted 146.50 hectares of land during the three-month period when economic activities largely remained curtailed due to the **pandemic**, according to **Yamuna**

One unified platform to run your entire business

GET STARTED

Sales Marketing Finance



View in Hindi **R.भारत**

R. REPUBLICWORLD.COM

The Debate India News Coronavirus Entertainment News Sports News World News

Last Updated: 7th March, 2020 05:30 IST

UP's Jewar Airport Listed In World's 100 Strategic Global Infrastructure Projects For 2020

In a big achievement, the first phase of Jewar airport has been included in the world's 100 strategic global infrastructure projects for the year 2020

Written By **Marjiri Chitla**

f t



Good news for Noida people, Rapid train will run from Jewar Airport to Delhi

Ultra personal rapid transit cabs will be started to connect Noida International Airport being built in Jewar with Delhi. This PRT Will run from New Ashok Nagar in Delhi to Jewar Airport.



Ultra personal rapid transit cab will run from Jewar to Delhi (File Photo-AP)

Tansim Haider
Noida, 01 September 2020, (Updated 01 September 2020, 7:00 PM IST)

Story Highlights

PRT will run from New Ashok Nagar to Jewar in Delhi

DMRC will prepare project feasibility report

Those living in Noida and Greater Noida will benefit

There is good news for people living in Noida and Greater Noida. An important facility is going to be started to provide connectivity with Delhi to Jewar International Airport. Ultra Personal Rapid Transit Cab (PRT) will be started to connect Noida International Airport being built in Jewar with Delhi. This PRT will run from New Ashok Nagar in Delhi to Jewar Airport. Yamuna Expressway Authority has started work on this scheme. These rapid trains will run at a speed of 100 km per hour. Yamuna Authority has asked Delhi Metro Rail Corporation to prepare the feasibility of the project.

Actually, one station of Delhi Meerut track of Rapid train will be New Ashok Nagar of Delhi. Passengers will be able to take a rapid train from New Ashok Nagar in East Delhi. The distance between Jewar to New Ashok Nagar will be about 65 kilometers and its construction will cost half of the metro.

Yamuna Expressway NEWS HEADLINES



सोसायटियों में एसटीपी के नाम 77 मरीजों में संक्रमण, 85 ने कोरोना को हराया

प्रॉजेक्ट लेट नहीं होगा

अधिकारियों का कहना है कि लॉकडाउन के कारण भले ही कुछ पेपर वर्क लेट हो गए हैं, लेकिन इसका असर परियोजना के पूरे होने पर नहीं पड़ेगा। 2023 से यहां उड़ान शुरू हो जाएगी। यहां शुरूआत में दो रनवे से उड़ानें शुरू होंगी। दूसरे चरण में 6 रनवे बनेंगे। 6 रनवे बनाने के लिए लॉकडाउन में भी प्रॉजेक्ट इम्प्लीमेंट कमिटी (पीएमसी) स्टडी रिपोर्ट तैयार करने में जुटी रही।

5 लाख करोड़ निवेश और 5 लाख को रोजगार की आस

ग्रेटर नोएडा। एयरपोर्ट से सिर्फ हवाई सफर ही आसान नहीं होगा, बल्कि इस क्षेत्र की तकदीर बदलेगी। यीडा सिटी एरिया में करीब पांच लाख करोड़ रुपये का निवेश और पांच लाख रोजगार के अवसर मिलेंगे। फिल्म सिटी और मेडिकल सिटी के लिए भी एयरपोर्ट सोने पे सुहागा साबित होगा। टेक्निकल इकोनॉमिक फिजिबिलिटी रिपोर्ट (टीईएफआर) के मुताबिक, नोएडा एयरपोर्ट के बनने से यीडा सिटी क्षेत्र में भारी निवेश होगा। नियाल के सीईओ डॉ. अरुणवीर सिंह ने टीईएफआर के हवाले से बताया कि एयरपोर्ट की वजह से करीब पांच लाख करोड़ रुपये के निवेश का आकलन है। इसमें सबसे ज्यादा औद्योगिक निवेश होगा। तमाम देसी-विदेशी कंपनियां यहां उद्योग लगाना चाहेंगी। रिपोर्ट के मुताबिक इस एरिया में करीब पांच लाख युवाओं के लिए रोजगार के अवसर मिलेंगे। नोएडा एयरपोर्ट से ही एक लाख युवाओं को रोजगार मिलने की उम्मीद है। दूसरी तरफ यीडा सिटी एरिया में फिल्म सिटी और प्रदेश का पहला मेडिकल डिवाइस पार्क विकसित करने की घोषणा हुई है। इससे निवेश का दायरा बढ़ेगा। ब्यूरो

रियल एस्टेट में आएगी तेजी

एयरपोर्ट से रियल एस्टेट सेक्टर की मंदी भी दूर होगी। नेरेडको यूपी के अध्यक्ष व सुपरटेक कंपनी के चेयरमैन आरके अरोड़ा ने कहा कि नोएडा एयरपोर्ट के करार के साथ ही लोगों को और भरोसा हो गया है कि यहां पर एयरपोर्ट जरूर बनेगा। इससे आसपास की प्रॉपर्टी की कीमतों में उछाल आएगा। लोग निवेश करेंगे। इसका फायदा रियल एस्टेट सेक्टर को मिलेगा। एयरपोर्ट बनने से निवेश बढ़ेगा। रोजगार के अवसर बढ़ेंगे, जिससे लोग रहने के लिए घर भी खरीदेंगे।

1st phase of Jewar airport to handle 12M people yearly

► Continued from P1

In order to avoid a big gathering, the proceedings were screened live on social media platforms and through Zoom. Martin Schmidli, head of international operations at Zurich, and Daniel Bircher, CEO (Asia), attended the event through Zoom.

Bircher said the signing of the agreement marked an "important milestone" in the development of the airport, whose first phase will have a capacity to handle 12 million passengers annually. "In partnership with the UP government and the government of India, Zurich Airport International looks forward to making this airport a major player in Indian air transportation and a benchmark for ease of use for passengers and logistic partners. We are a committed and trusted partner for India's growth, and see tremendous opportunity to invest and participate in India's aviation growth story," he said in a statement.

Goyal saw business sentiment in the region getting a turbo boost because of the airport. "The Jewar international airport has the potential to uplift sentiments in the entire Noida and Greater Noida belt. More investments will pour in here because apart from dealing with passenger traffic, Jewar will also emerge as the industrial, logistical and cargo hub," he said.

The Noida and Greater Noida industrial development authorities have already opened doors to private players for setting up warehouses and other logistical infrastructure in the area. They have increased the floor area ratio for such units by 33%.

The government, which has already acquired 1,334 hectares required for the first phase of the project, on Monday handed over land in Jewar Bangar village to NIAL to develop a township.

For full story, visit toi.ir

Jewar pact signed, work to begin in June

Shalabh@timesgroup.com

Greater Noida: The final concession agreement for Jewar international airport was signed between the UP government and Swiss major Zurich AG in Greater Noida on Wednesday afternoon, paving the way for the project to move past paperwork and enter the construction stage.

Senior Zurich AG executives, who were in Noida to sign the pact, said they expected to get physical possession of 1,334 hectares — required for the first phase of the airport — in the next six months and construction to begin next June. The airport's first phase, which will have two runways, has a commissioning deadline of 2024.

The 40-year agreement was signed around 1.20pm at the office of the Noida International Airport Ltd (NIAL) in Omega 1 sector. Christoph Schnellmann, CEO of Yamu-

1ST PHASE BY 2024

- Zurich AG executives say they expect to get physical possession of 1,334 hectares — required for the first phase of airport — in next six months
- 1st phase, which will have 2 runways & capacity to handle 12m flyers annually, has a commissioning deadline of '24
- Dist authorities have already opened doors to private players for setting up warehouses

na International Airport Pvt Ltd — the special purpose vehicle set up by Zurich in January for the airport project — and Arun Vir Singh, director of NIAL, were the signatories. SP Goyal, additional chief secretary to the CM, and Surendra Singh, director of the civil aviation directorate, were also present for the signing. Singh and Ritu Maheshwari, the CEO of Noida Authority, signed as witnesses.

► Continued on P 4

BIG NEWS: There will be two bullet train stations in Gautam Budh Nagar, this will be the only district between Delhi and Varanasi, stations to be built here

Updated Oct 18, 2020 20:11:05 IST | [Mayank tawer](#)

The central government is working fast on the bullet train project between Delhi and Varanasi. After walking from Delhi, this train is located in Gautam Buddha Nagar district.



Delhi-Varanasi Bullet Train: Central Government is working fast on the bullet train project between Delhi and Varanasi. After running from Delhi, this train will stop at two places in Gautam Buddha Nagar district. Gautam Budh Nagar will be the only district between Delhi and Varanasi where this train will stop at 2 places. The first stoppage of bullet train will be in Sector-148 of Noida. The second station will be built near Terminal-1 at Jewar International Airport. This will connect Noida International Airport to Delhi. Running at a speed of 300 kilometers per hour, this train will reach Delhi from Banaras in two and a half hours.

BIG NEWS: Now farmers of Aligarh and Mathura will be Malamal, Yamuna Authority will build a big land bank near Jewar Airport

Updated Oct 15, 2020 19:55:18 IST | [Harish rai](#)

After Gautam Budh Nagar, development plans will now go ahead in the villages of Aligarh and Mathura. Thousands of farmers from hundreds of villages in these districts too...



Key Highlights

- Yamuna Authority will create land bank for industrial development
- Authority will create a land bank of 4950 acres in both the districts

After Gautam Budh Nagar, development plans will now proceed in the villages of Aligarh and Mathura. In these districts too, thousands of farmers from hundreds of villages are going to get the benefit of Jewar International Airport. The Uttar Pradesh government has directed the Yamuna Authority to form a land bank to develop industrial hubs at Tappal in Aligarh and Raya in Mathura. The Chief Minister has given this order considering the possibilities of industrial development in this area. Now the Yamuna Authority will buy land here, so that the plans can be materialized.



BIG NEWS: Yamuna Authority has given land to 46 companies, 757 crore will be invested, 14 thousand will get employment, complete information

Updated Oct 15, 2020 20:05:14 IST | [Mayank tawer](#)

Yamuna Expressway Industrial Development Authority has achieved a major achievement on Thursday. Authority on Thursday together ...



Key Highlights

- - Authority allocated 46 plots of 5 and 10 thousand square meters
- - Allocation has been made for MSME, Apparel and Handicraft Park

Yamuna Expressway Industrial Development Authority has achieved a major achievement on Thursday. The Authority on Thursday has allotted industrial plots to 46 companies simultaneously. These allocations have been made in Sector-29. This will lead to an investment of Rs 757 crore in the authority sector. Also, about 14,702 people will get employment. All must operate their own unit within five years. Allotment can be canceled if the unit is not started on time.

METRO CONNECTIVITY TILL JEWAR



Now Metro will connect Jewar Airport directly to Sector 142 of Noida

According to Navbharat Times Article on 23rd Jan 2020,

It has been decided to change the proposed Metro route for **Greater Noida** Jewar Airport. It will now connect Jewar directly to the Aqua Line's Sector 142 metro station. Earlier, it was going to be connected to Knowledge Park 2 metro station near Pari Chowk. Noida Metro Rail Corporation is preparing to connect the aqua line to the Botanical Garden. Due to this, the route of Jewar Airport Metro has also been changed.

Delhi Metro Rail Corporation will prepare DPR. A 3-lane metro track will be constructed from Jewar to Sector 142. The two tracks will be for the Yamuna Expressway Industrial Development Authority (YIDA) metro, while the third track will run on the express metro. The express metro will be connected to Indira Gandhi Airport in Delhi via Shivaji Park via DMRC's line.



Good news for Noida people, Rapid train will run from Jewar Airport to Delhi

Ultra personal rapid transit cabs will be started to connect Noida International Airport being built in Jewar with Delhi. This PRT will run from New Ashok Nagar in Delhi to Jewar Airport.



Ultra personal rapid transit cab will run from Jewar to Delhi (File Photo-AP)



Tansim Halder

Noida, 01 September 2020, (Updated 01 September 2020, 7:00 PM IST)



Story Highlights

PRT will run from New Ashok Nagar to Jewar in Delhi

DMRC will prepare project feasibility report

Those living in Noida and Greater Noida will benefit

There is good news for people living in Noida and Greater Noida. An important facility is going to be started to provide connectivity with Delhi to Jewar International Airport. Ultra Personal Rapid Transit Cab (PRT) will be started to connect Noida International Airport being built in Jewar with Delhi. This PRT will run from New Ashok Nagar in Delhi to Jewar Airport. Yamuna Expressway Authority has started work on this scheme. These rapid trains will run at a speed of 100 km per hour. Yamuna Authority has asked Delhi Metro Rail Corporation to prepare the feasibility of the project.

Actually, one station of Delhi Meerut track of Rapid train will be New Ashok Nagar of Delhi. Passengers will be able to take a rapid train from New Ashok Nagar in East Delhi. The distance between Jewar to New Ashok Nagar will be about 65 kilometers and its construction will cost half of the metro.

CONNECTIVITY WITH GURGAON

From Gurgaon to Noida in just 45 mins

2016 Extension of Metro under phase 3 will reduce the travel time

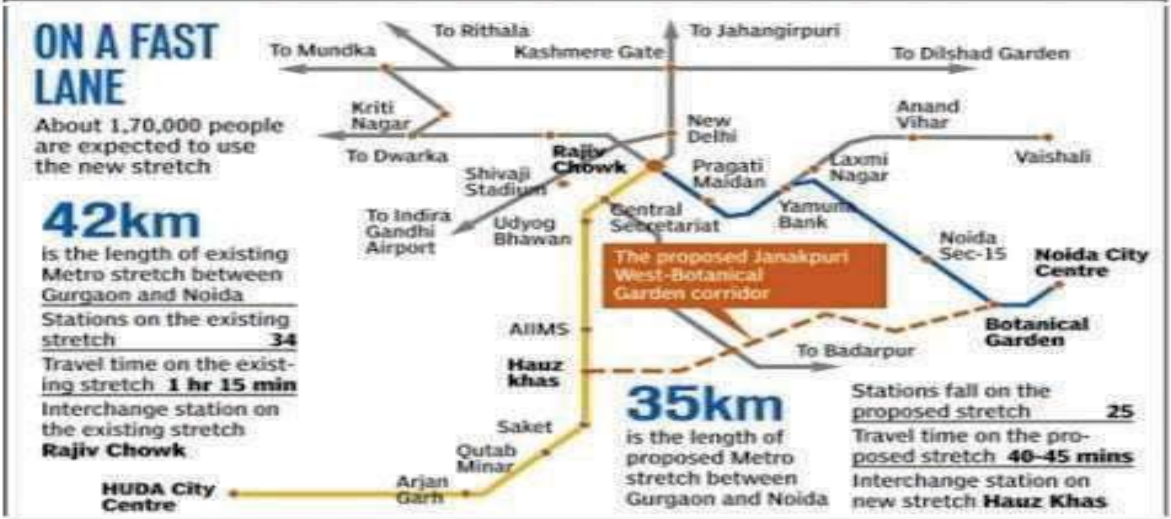
Subhendu Ray
 subhendu.ray@hindustantimes.com

NEW DELHI: Two major satellite cities of the national capital region — Gurgaon and Noida — will come close to each other in next five years.

With extension of Delhi Metro under proposed phase 3, the travel time between the two cities will come down remarkably to about 40-45 minutes from the existing one hour 15 minutes.

“Currently, a Metro journey from Huda City Centre in Gurgaon to Botanical Garden in Noida takes about one hour 15 minutes with the interchange at the highly congested Rajiv Chowk station. After completion of phase 3, travel time between the two cities would reduce to 45 minutes,” said an official of Delhi Metro Rail Corporation (DMRC).

The proposed Janakpuri West-Botanical Garden corridor (35 km) will have interchange facility at Hauz Khas Metro station of Line 2 (Jahangirpuri-Huda City Centre). So the passengers coming from Gurgaon can get down at Hauz Khas and take a direct train to Botanical Garden. This corridor is expected to be operational



by 2016, said DMRC officials. “This arrangement will benefit thousands of Metro commuters, especially the office goers who travel between Gurgaon and Noida daily,” said Anuj Dayal, DMRC spokesperson. The existing Hauz Khas Metro station will be turned into an interchange station to facilitate this connectivity.

A road journey between the two cities takes about 1.5 hours as the commuters have to traverse through the congested streets of Delhi. Absence of direct autos and infrequent bus services further add to the inconveniences of the people. A huge portion of them would start commuting by Metro once the proposed cor-

ridor becomes functional, expects Delhi Metro. About 1,70,000 passengers are expected to use the interchange Hauz Khas Metro station by 2016, as per the project report. Currently, the footfall at Hauz Khas is approximately 40,000. The total number of halts or stations on the way from Gurgaon to Noida will also decrease.

CONNECTIVITY TO FARIDABAD & GURGAON

Nod for road joining Gr Noida, Fbd

₹200Cr Project Will Improve Connectivity Between NH-8 And Yamuna E-Way

Dipak.Dash@timesgroup.com

New Delhi: The government has approved construction of a road connecting Faridabad and Greater Noida that will improve connectivity between NH-8 in Gurgaon and Yamuna Expressway. The missing link on this stretch—where fresh road has to be built or existing road to be strengthened—is about 24.6km, which will be developed into a two-lane all-weather road including construction of a 600-metre bridge on Yamuna.

This road will also work as a bypass for traffic coming from NH-8 and heading towards Noida, Greater Noida, Agra, Kanpur and Lucknow by avoiding congested Delhi roads.

Foundation stone for this

LINKING HIGHWAYS

LENGTH | 24.6km COST | Rs 200cr approx

Proposed link: Connecting Faridabad & Greater Noida via Jasana-Manjhawali & Atta Gujran



PROJECT

Constructing a 2-lane road & a bridge on Yamuna

BENEFIT

Improved connectivity between NH-8 (Jaipur-Delhi highway) & Yamuna Expressway via Faridabad (NH-2) bypassing Delhi

project will be laid in the next 7-10 days for this Rs 200 crore project, just before the poll date for

Haryana assembly election is announced. Sources said that the project was pushed by MoS

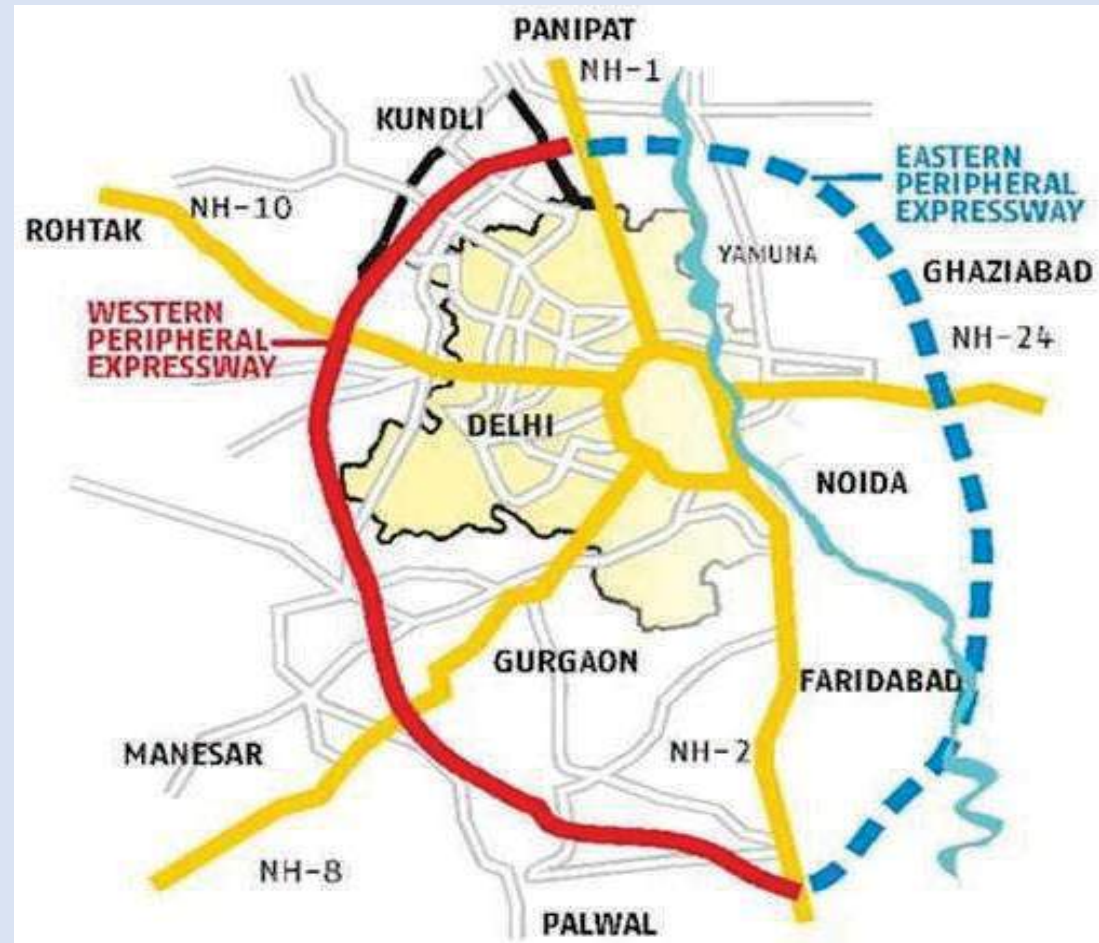
(road) Krishan Pal Gujjar, who is Faridabad MP. "We have got clearances from both Haryana

and Uttar Pradesh to start work," said a ministry official.

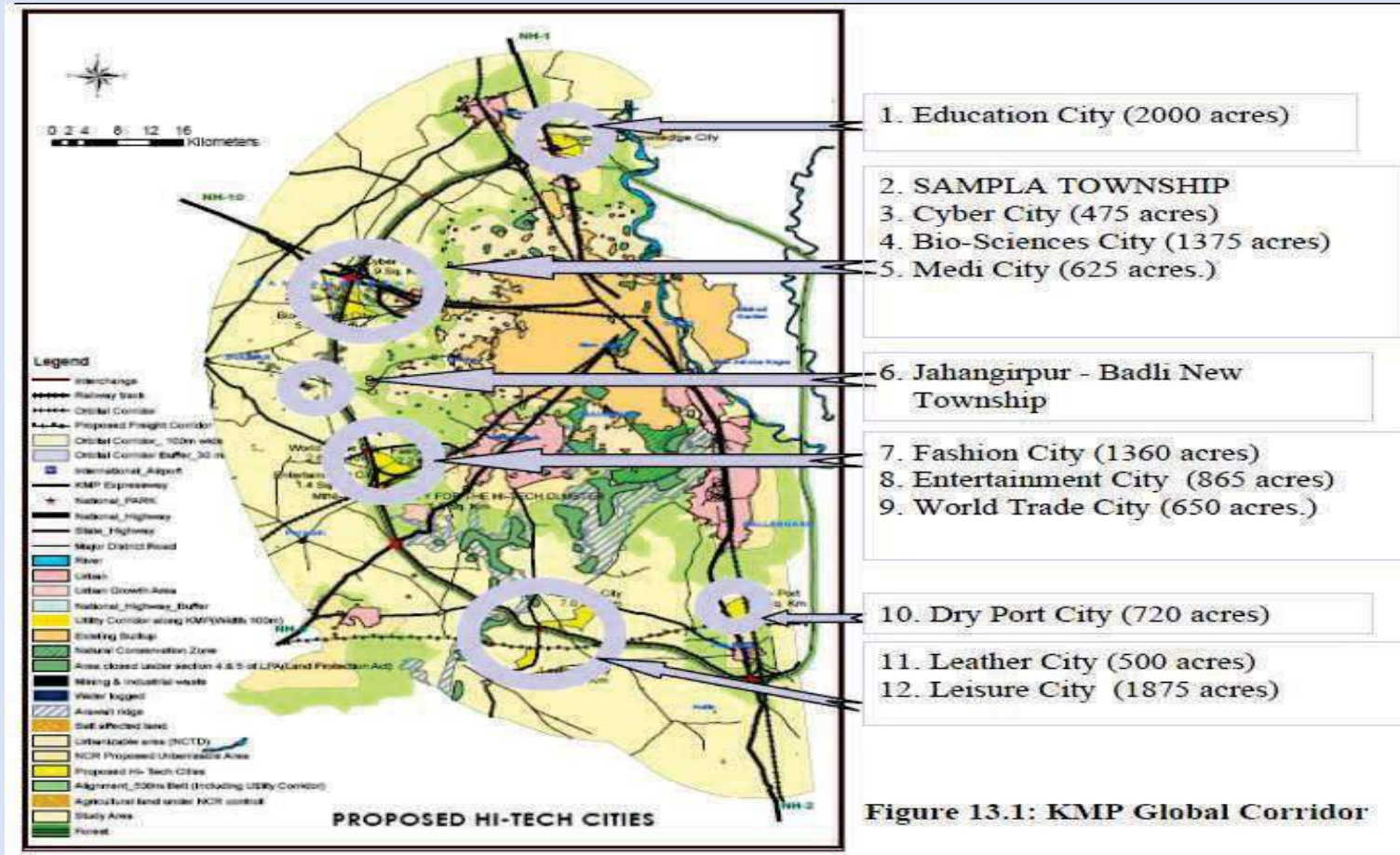
The 14.6km road to be taken up as an inter-state connectivity project involves connecting Faridabad to Greater Noida via Jasana-Manjhawali, Atta Gujran at Yamuna Expressway service road. At present there is no road between Manjhawali and Atta Gujran while some parts of the remaining project corridor is unpaved and unmaintained.

The project corridor will serve as a major inter-state connectivity between Rajasthan, Haryana, Delhi and Uttar Pradesh. "The link will also divert the traffic coming to Jaipur side to Agra, Kanpur and Lucknow. At present, all this traffic need to enter Delhi from Rajasthan and Faridabad, Mewat and Gurgaon districts," said a source.

CONNECTIVITY TO KGP & KMP EXPRESSWAY- NCR RING ROAD



CONNECTIVITY TO KMP- 65000 HECTARE DEVELOPMENT PLANNED



CONNECTIVITY TO KGP EXPRESSWAY



Also known as KGP Expressway (Kundli-Ghaziabad-Palwal), is a 135 km long Expressway designed to provide signal free connectivity between Palwal and Kundli.

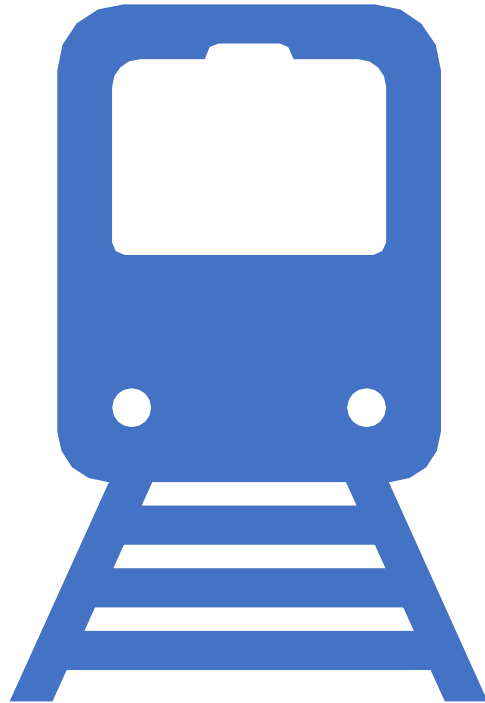
EPE will pass through Faridabad & Sonipat districts in Haryana and Gautam Budh Nagar, Ghaziabad and Baghpat districts in Uttar Pradesh.

Proposed route of EPE (The project takes off from NH-1 in Kundli , crosses Yamuna near Mawikalan, Hindon river near Sharfabad, NH-58 near Duhai, NH-24 near Dasna, NH-91 near Beelakbarpur, Kasna-Sikandrabad road near Sirsa, re-crosses Yamuna near Fajjupur Khadar, Atali-Chinsa near Maujpur and meets NH-2 beyond Palwal.

Will ensure non stop connectivity major cities.

BORAKI RAILWAY STATION

with 52 platforms, biggest logistics hub



- Boraki Railway Station is a railway station in Greater Noida, in the Indian state of Uttar Pradesh. It lies on Delhi-Kanpur trunk route as well as on Delhi Mumbai Industrial Corridor Project. The government plans to revamp Boraki junction and create multi modal transport hub around it over an area of 400 acres. There is a plan to link Boraki to IGI Airport through high speed metro rail (max speed 160 km/h) which will cover the distance in about 40 minutes. The metro will start at Boraki and will pass through Pari Chowk, Badarpur, Delhi, Tughlakabad, Khanpur, Delhi and Mehrauli before terminating at the IGI airport
- This railway station is proposed to be developed as a transport hub with a state-of-art railway terminus further supplemented by an Inter-state Bus Terminus (ISBT) and Mass Rapid Transit System (MRTS) station alongside commercial activity to optimally capture the strategic location where various transport modes congregate thereby calling it as a 'Multi-Modal Transport Hub (MMTH) at Boraki in Greater Noida'.
- The site for station development is proposed to be located at the village of Boraki, approximately 300m from the current halt station at Boraki along the Delhi-Howrah railway line in the Gautam Buddha Nagar district in State of Uttar Pradesh.
- The total site area is 167 hectares which includes components like:
 - Passenger Rail Terminal for Indian Railway trains
 - ISBT for Regional buses
 - MRTS terminating station for DMICDC's proposed link from Boraki to IGI Airport, Delhi
 - Commercial
 - Mixed Used
 - Public – Semi Public Spaces

DMIC

Taking the Road to Growth

A mix of road, rail, port and airport, the Delhi-Mumbai Industrial Corridor is set to change the business landscape

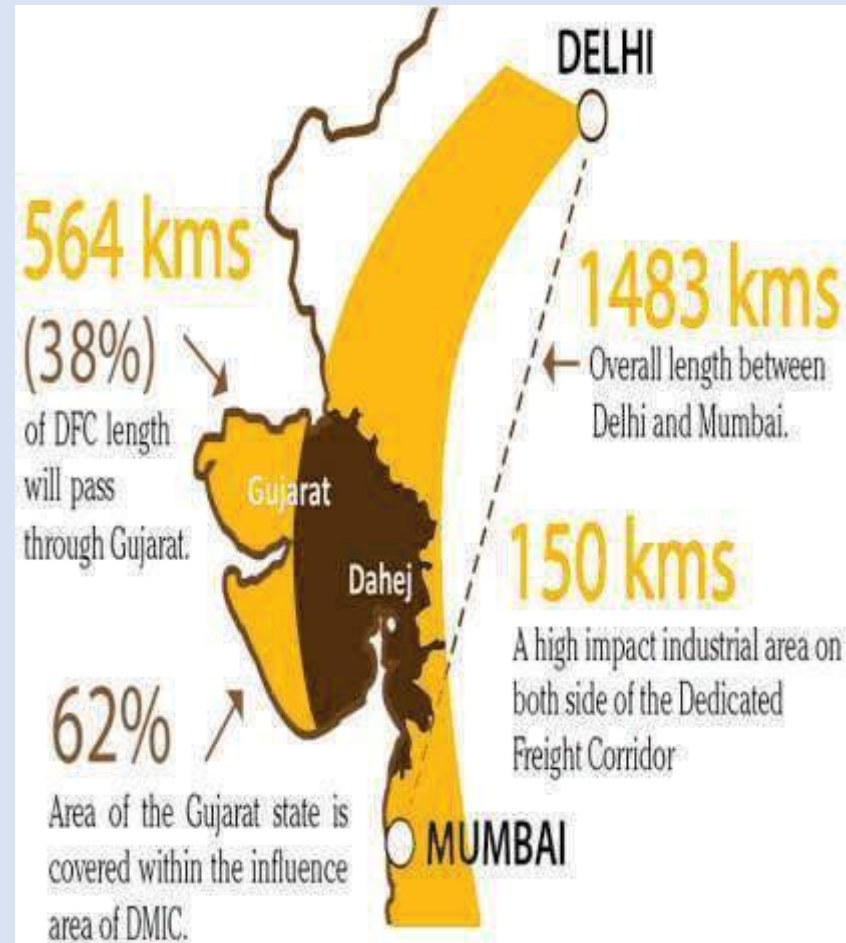
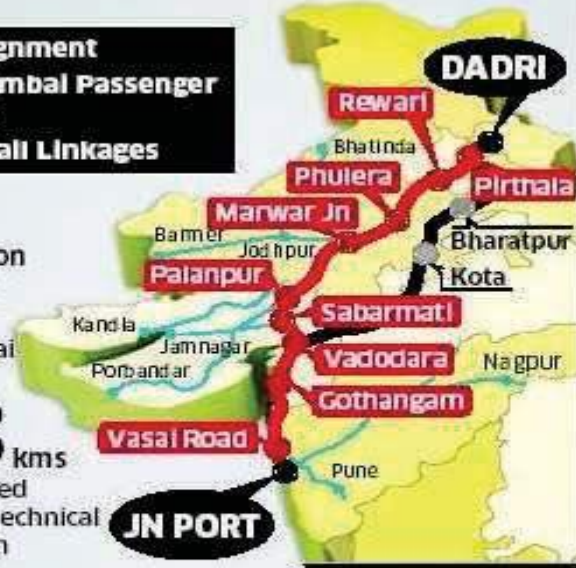
- DMIC Alignment
- Delhi-Mumbai Passenger Rail Link
- Feeder Rail Linkages

\$90 billion
infrastructure
running from
Delhi to Mumbai

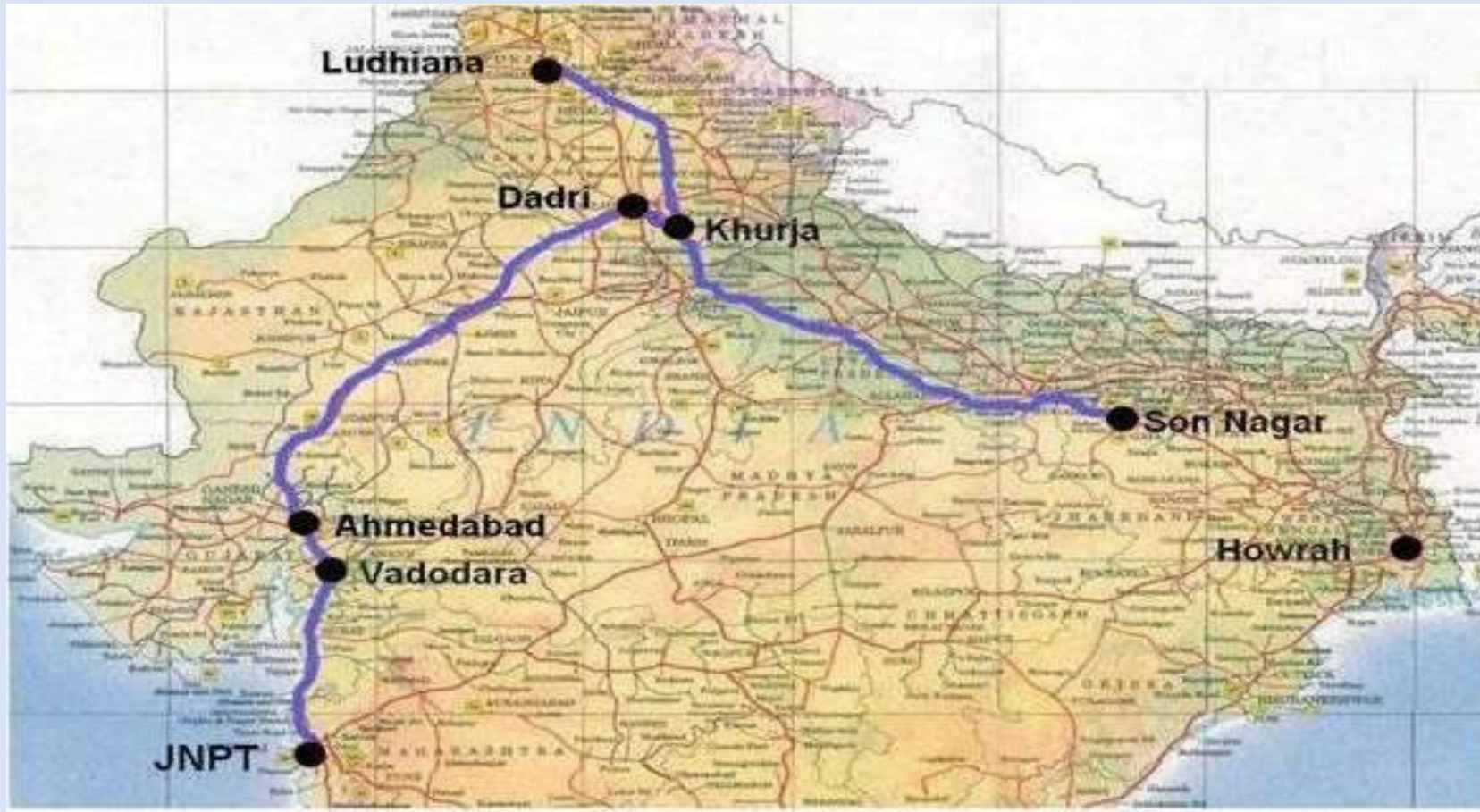
1483 kms
project is backed
by financial & technical
aid from Japan

₹18,500 cr
revolving fund will help
in planning projects
along the corridor

7 new mega cities to
be created along the
freight corridor
It includes 9 mega Industrial
zones, high speed freight line,
three ports, and six airports



DFC (DEDICATED FRIEGHT CORRIDOR)





CRICKET STADIUM

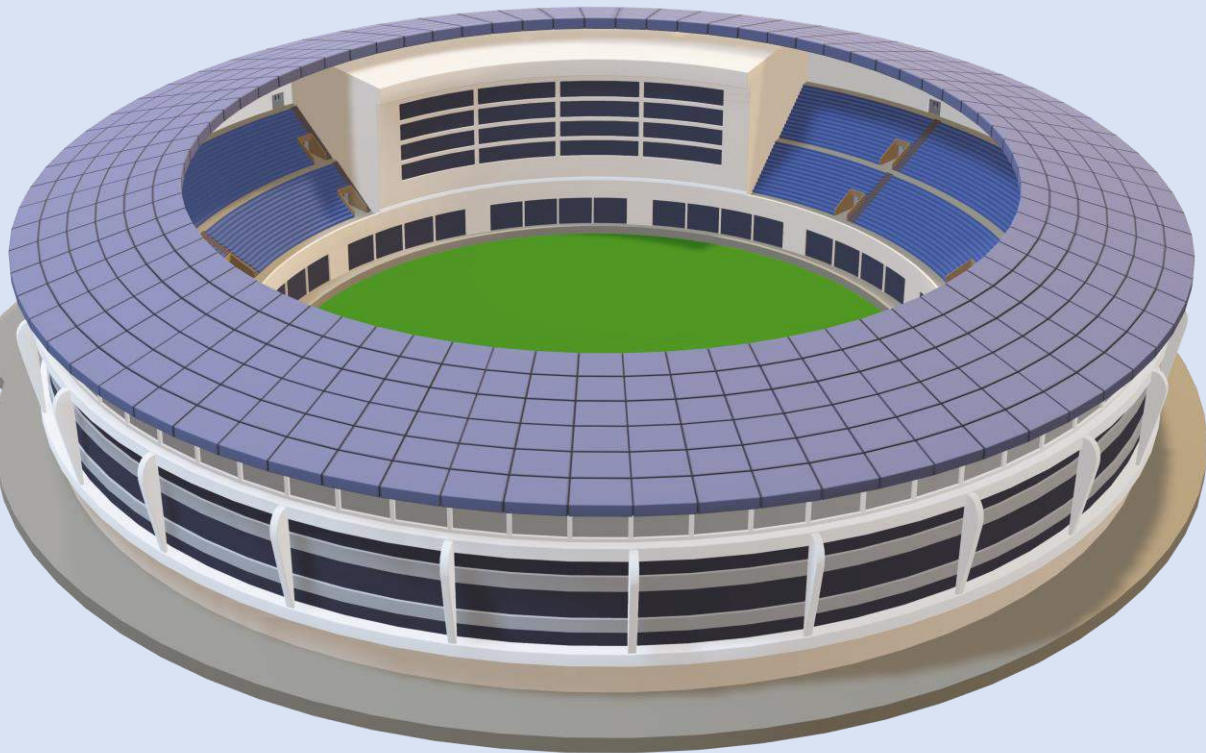
Cricket Stadium at Jaypee Sports City will be the second international cricket stadium in Uttar Pradesh, other being Green Park stadium in Kanpur.

Designed to seat 100,000 spectators, first phase will house 40,000 seats.

Uttar Pradesh Cricket Association (UPCA) has already inked 50 years agreement with JPSI to hold Twenty20 matches.

Most of the places have become famous in India because of proximity to cricket stadium like Mohali.

Today Mohali is known because of cricket stadium and the property prices in Mohali are same or even higher than Chandigarh.



FORMULA F 1 TRACK



Analysis of properties near F1 Track

Property near F1 track is an address

While comparing the prices of 11 F1 circuits across the world one thing is common that the prices of properties are more near F1 circuits than properties outside the circuits.

When we did the average of all the 11 cities with respect to rent and rates inside and outside the circuits we found that there was a difference in rates upto 55% and 59% respectively.

Wherever F1 circuit has been build more development has come in that area.

YAMUNA EXPRESSWAY'S EDUCATION BENEFITS



Asia's Largest University Gautam Buddha University (GBU) 650 Acres

17 Universities are proposed only on Yamuna Expressway and within 15 km there are approx. 200 Schools/ Colleges/Universities that are operational.

Galgotia University, Noida International University, Sharda University, Benetton University to name a few which are operational.

GAUTAM BUDH UNIVERSITY

Gautam Budh University



- Spread over 511 acres (30% green and 5000 trees) on the southern edge of Greater Noida, Gautam Budh University was entirely funded by New Okhla Industrial Development Authority. Gautam Budh University boasts of 5 single occupancy hostels for 5,000 students, library spread over 1.8 lakh sq. ft. for 2,000 students, an auditorium with 3000 seating capacity and total built-up area of 55 Lakh sq. ft.

Yamuna Expressway, the area is set to become one of the prime destinations of students. Already 29 Universities have been approved by U.P Govt

Gautam Budh University, spread over 511 acres, is built to accommodate more than 50000 students

Already operational with 5000 students


Other institutes include Galgotia's University, Noida International University (75 acres with a capacity of 30000 students)

More than 300000 students will be a part of these universities leading to high rental value in these area's.

Adani will also establish an international university here in collaboration with some foreign universities in 300 acres of land.

A graphic for the IT / ITES sector featuring a blue globe and a hand pointing at a screen.

**IT / ITES
Sector**

A graphic of a bank building with the word 'BANK' on the pediment and several stacks of gold coins in front.

**INDUSTRIES
@YAMUNA
EXPRESSWAY**

A close-up of a hand holding a small, detailed model of a two-story house.

FRESH



YAMUNA EXPRESSWAY – EMPLOYMENT BENEFITS



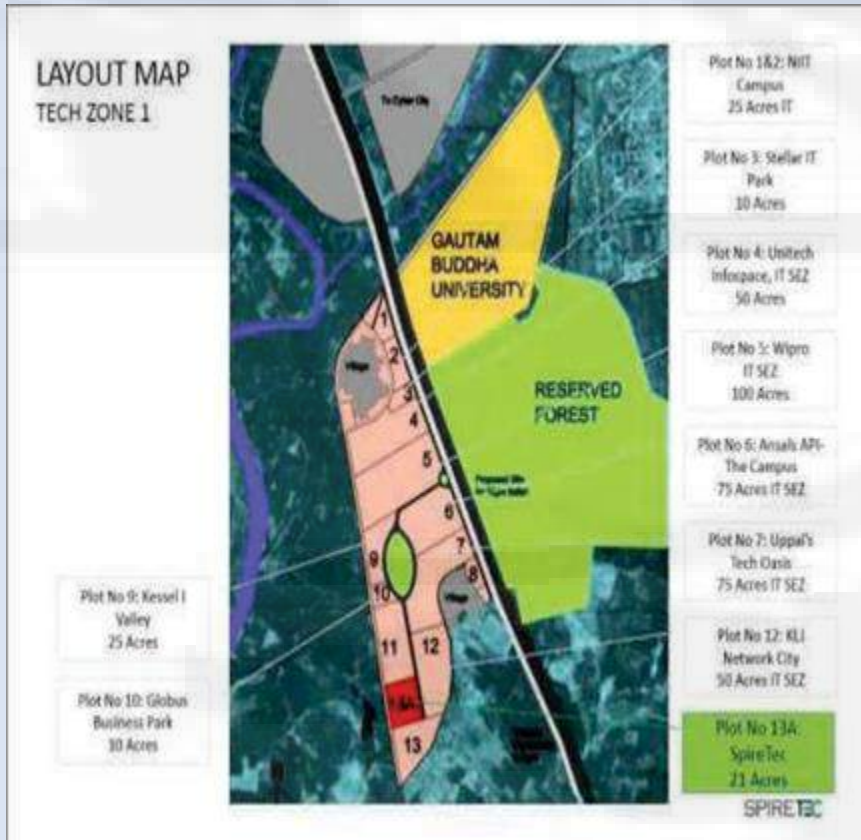
- Jewar Airport Aerocity to create 2.5 lakhs jobs in couple of years of being Operational.
- Vivo/Uflex/Intex/ Patanjali already taken land banks in the area.
- NIIT Technology and Stellar Park are already operational in which at present more than 15000 employees are working
- 25 Acre land allotted to Infosys in Noida sec 85 and **will infuse Rs 5000 crores in next 2 years** and expect to generate 35000 jobs and making it as headquarters of North India operations.
- According to Knight frank 2022 survey 30000 approx. RTM flats would be required.
- Patanjali foods have bought 425 acres land and invested Rs 6000 Crores to set up a food processing plant.
- Bikaner Snacks will set up their food processing unit across 35 acres land with Rs 300 Crores.
- 110 Acre land allotted to Oppo and construction is in full swing

YAMUNA EXPRESSWAY – EMPLOYMENT BENEFITS



- USA based WTC based (having presence in 110 Countries & 330 Cities) seeks 600 acres landbank at Yamuna Expressway to set up Rs 20,000 Crores worth commodity city and will offer employments opportunities to 6 lacs people.
- Industrial Plots allotted to 400 Small Scale Industries in nearby Sectors 32/33
- Adani, Paytm, Samsung , Huawei and 30 other MNC's companies have already signed MOU with YEIDA in last year investor summit in Noida. Investing worth 10,000 Crores and creating 5 Lakhs job.
- In 2018, Prime Minister Narendra Modi has laid the foundation of Industrial project worth Rs 600 Billion here, (26%)of projects pertained to Heavy Industries, Food processing (17%), IT(11%), Housing (10%), MSME(6%), Dairy(5%), Tourism(5%) and Animal Husbandry (4%). Again this project will generate lacs of employment.
- YEIDA have allotted 200 acres land for textile industries in which Noida Apparel Export cluster will invest 5000 Crores for textile manufacturing.
- YEIDA is also planning to develop 500 acres Mega Entertainment City and Mega Film City and will invest 8000 Crores for the same.
- Samsung is coming with its largest manufacturing plant of accessories which will generate 50,000 employment
- Current UP Government plans 1000 Acre Mega Electronic City Rs 200 billion plan which will create 3 lacs jobs opportunities.
- Due to Govt policy of Skill India, Make in India and Digital India all big organizations are looking for land bank here due to connectivity with Jewar Airport which will having Passenger as well as Cargo facilities which will create job opportunities.

IT/ITES SECTOR



With 650 acres of integrated IT Park developments, Sector Tech Zone is a promising area with excellent potential for future employment of thousands of IT & ITES (IT Enabled Services) professionals.

There are a total of 15 plots, ranging between 8-100 acres, with most of them already been allotted.

Major names include: Plot 1&2: NIIT (25 Acres), Plot Stellar (10 Acres), Plot 4: Unitech (50 Acres), Plot 5: Wipro (100 Acres), Plot 6: Ansals (75 Acres), Plot 7: Uppals (75 Acres), Plot 8: Kessal Valley I (25 Acres), Plot 10: Globus(10 Acres), WTC.

Currently 5000 employees are working in NIIT once all the offices are functional more than 500000 employees will be working in Tech zone leading in high rental and residential demand in this area.

Sector Tech Zone is expected to become most sought after destination by IT & ITES companies.

With WTC office lot of multinational companies will start operations on YEW

BIG NEWS: Yamuna Authority allocated 700 plots for MSME, Apparel Park, Handicraft and Toy City, 63 startups to start

Updated Oct 09, 2020 21:52:45 IST | Anika Gupta

Agreement with the Swiss company to start construction of the Jewar International Airport two days ago under the Yamuna Expressway Industrial Development Authority ...



An agreement has been reached with the Swiss company to start construction of the Jewar International Airport two days ago under the Yamuna Expressway Industrial Development Authority. The arrival of Jewar International Airport here has excited entrepreneurs, businessmen and investors. On Friday, the Development Authority has drawn several of its plot plans. The Yamuna Authority on Friday has allotted plots for MSME, Apparel, Handicraft and Toy City. Paving the way for 700 people to set up industries in the authority area. 63 people have been allotted plots to start the startup.

Around 5 lakh people are expected to get employment from the allocation made on Friday. The Yamuna Authority on Friday had come out with plans for MSME, Apparel, Handicraft and Toy City. In these schemes, a draw was taken on Friday for plots smaller than 4000 meters. The draw was held at the Community Center of Sector P-3 from 10 am. Supervisor IAS TN Singh and retired Judge JP Gupta were present during the draw. The entire allocation process was videographed and photographed. The authority broadcast live on its Facebook page.

Representatives of the above four parks were also present during the event. The draw was carried out under the supervision of a committee constituted under the chairmanship of Ravindra Singh, Additional Chief Executive Officer of the Authority. In this, OSD Shailendra Bhatia, OSD Navneet Goyal, GM Project and Industries KK Singh, GM Finance Vishambar Babu, Rituraj Vyas, Neelam Shrivastava, Harshvardhan etc. were present.

How many allocations were made in which category

- Under the Apparel Park Scheme, 20 plots of 500 m मीटर, 17 of 1000 m मीटर, 18 of 2000 m मीटर, 01 of 3000 m मीटर and 5 of 4000 m मीटर were allotted.
- Under the MSME scheme, 182 plots of 450 square meters, 66 of 595 square meters, 128 of 1000 square meters, 60 of 1800 square meters, 28 plots of 3000 square meters have been allocated.
- Similarly, 34 plots of 450 square meters, 14 of 595 square meters, 11 of 1000 square meters, 5 of 1800 square meters and 3 of 3000 square meters have been allocated under the Handicraft Plan Scheme.
- Under the Toy Park (Toy City) scheme, 76 plots of 1000 square meters, 7 of 1800 square meters, 19 of 1952 square meters, 3 of 3000 square meters and 3 plots of 4000 square meters were allotted.

There were 2290 applications in all four schemes

These schemes of Yamuna Authority allotted plots for 63 startups. There were 2290 applications in all the four schemes. While 700 plots were to be allocated. These plots are about 178 acres. Now the way for 63 startups started in the Yamuna Authority area. Shailendra Bhatia, Special Work Officer, Yamuna Expressway Industrial Development Authority, said, "The draw of the plots of the scheme of MSME, Apparel, Handicraft and Toy City. The draw was carried out following the rules of Kovid-19. Allotted 177.29 acres of land. done."

NOIDA YAMUNA EXPRESSWAY DECLARED ELECTRONICS MANUFACTURING ZONE

ROADMAP FOR DEVELOPMENT

KEY POINTS OF UP Electronic Manufacturing Policy

► Noida, Greater Noida and Yamuna Expressway to be electronics manufacturing zones

► Aims at converting UP into the favoured state for investments



► Electronics mission directorate will be set up

► Implementation of policy to be tracked by an empowered committee

► Govt to provide financial benefits to units set up under the policy

As per electronics manufacturing policy Noida, Greater Noida and the Yamuna Expressway region has been declared as an electronics manufacturing zone.

This policy will be helpful in setting up electronics systems design and manufacturing (ESDM) units & will encourage economy and create jobs.

The target of the policy is to attract investments worth Rs20,000 crore in the ESDM sector and 3 lakh jobs by 2022, he said. An electronics mission directorate will also be set up for the successful implementation of this policy which will have a mission director, deputy director and other staff.

LIST OF EXISTING COMPANIES

Company

- Asian Paints Ltd.
- Delphi
- Denso India Ltd.
- Devyani Beverages Ltd.
- Escorts Yamaha Motors
- Hind Polymers Ltd.
- Hindustan Adhesive Ltd.
- Hindustan Times
- Honda Power Products
- Honda Siel Cars India Ltd.
- Hongo India
- Hotline Appliances
- HPCL Ltd.
- Jay Containers
- J.K. Magnetics Ltd.
- Korin India Ltd.
- L.G. Electronics
- Majestic Auto
- Moser Baer
- New Holland Tractors
- Nicco Batteries Ltd.
- Punjab Fibres Ltd.
- Pushpsons Fibrol Ltd.
- Pushpsons Industries Ltd.
- Reinz Talbros Ltd.
- Sakura Seimitsu Ltd.
- Samtel Color Ltd.
- Vectra Ltd.
- Hindustan Times
- Daewoo Electronics
- Priya Foods
- G S C Toughened Glass
- T-Series
- Sheela Foams
- Videocon

Product

- Paints
- Automotive Systems
- Auto Parts
- Pepsi Soft Drinks
- Motor Cycle
- Plastic Granules
- Adhesive Tapes
- Press
- Power Products
- Honda Passenger Cars
- Automotive Components
- Electronics
- LPG Bottling Plant
- Ship Containers
- Audio/Video Tapes
- Cielo Rear Suspension
- Electronics
- Two Wheelers
- Data storage devices
- Ford Tractors
- Auto Batteries
- Cotton Yarn
- Industrial Oil
- Cotton Fabrics (100% EOU)
- Auto parts
- Clocks & Watches
- Colour Picture Tubes
- Truck Manufacturer
- Printing Press
- Electronics
- Biscuits
- Toughened Glass
- Audio and Video Cassettes
- Mattresses
- Electronics



Industries Operational in Greater Noida



Hindustan Times



(Majestic motors)



**Industries Already Taken Landbank
@Yamuna Expressway Near Golf Country**

BMW 350 Acres
County Holdings 2700 Acres (Automotive Industry)
Intex Mobiles 50 Acres
Lava Mobiles 50 Acres
Haldiram's 25 Acres
Voltas 250 Acres
Patanjali 450 Acres
Vivo Mobiles 180 Acres

WTC MOX- Mobile Open Exchange Zone

- **At the UP Investor's Summit 2018, the Government of Uttar Pradesh (GoUP) has signed a Memorandum of Understanding (MoU) with World Trade Center (WTC) Noida to build a Mobile Open Exchange Zone (MOX) around Tech Zone, Greater Noida (TZGN).**
- **As per MOTT MacDonald report by 2020, India will be the 2nd largest smart phone market, with 130 billion India's total mobile sector value which will be 8.2 percent of GDP's contribution to Indian economy.**
- **MOX@Techzone is slated to transform into a focused mobile ecosystem harboring infrastructure service providers, retailers, distributors, handset manufacturers, mobile content, application development and service providers will ensure ground level success for programs like Make in India, Digital India and Skill India**
- **As per MOTT MacDonald Pvt. Ltd. report, the region is likely to attract Rs. 10,000 crore or more and will generate employment at large. We are confident that this MoU and will take them to next level," said P K Alok, Advisor to WTC Noida.**





Yamuna authority gears up to develop state's first 'medical device park' in Noida

NOIDA Updated: Sep 11, 2020 23:10 IST

Aimed to assist the Make In India initiative and supply world-class merchandise at an inexpensive price for therapy, Uttar Pradesh's first 'medical device park' will be built in Noida by the Yamuna Expressway Industrial Development Authority (Yeida). While around 250 acres of land has been identified in Sector 28 close to Yamuna Expressway for this, the Kalam Institute of Health Technology (KIHT), Visakhapatnam, has been assigned to make the detailed project report (DPR) for this park.



Authority to develop a pharma hub along Yamuna Expressway

- Yamuna Expressway Industrial development authority (YEIDA) has decided to carve out a dedicated sector to set up a pharmaceutical hub.
- Officials said the pharma hub to be developed in Sector 33 is expected to create around 40,000 jobs, officials said.
- The authority had earmarked 100 acres of agricultural land for the project. The authority already has 50 acres in its possession. It will purchase the remaining 50 acres from farmers very soon.



First Trauma Center of District will be built in Sector-20 of Yida

 Noida Bureau Updated Sun, 04 Oct 2020 01:33 AM IST



Greater Noida. The first Government Trauma Center of the district will be built in Sector-20 of Yamuna Authority. For this, 2000 square meter land has been given free of cost by the authority. Also, the Yida Board has approved the free land for 400 KV power plant and Skill Development Center (SDC).

Travel Benefit's



- Expo Centre near Pari Chowk having 21 years lease and 1.5 Lakh delegates participating every year
- Formula F1 Track 5.14 Km designed by Hermann Tilke
- ICC standard India biggest Cricket stadium with 1,50,000 seating capacity.
- Holy places like Mathura and Vrindavan are only approx. 1hr distance only and 2 hr only to reach Taj Mahal Agra.
- India's 1st and world's 4th Night safari project to be developed on 250 acres of land located adjoining to GBU.

Yamuna Expressway - In News. Place to Invest



Z BUSINESS
07:58

Yamuna Exp. में निवेश फ़ायदेमंद

S&P BSE Midcap
12535.22
▲ 26.88

MCX Mentha Oil
969.60
▲ 12.20

1.36m 492.60 ▲ 10.15

Reliance Po

0:40 / 13:37



NTV PROFIT **NTV PRIME**

हमारी सलाह
Upcountry-Grand Circuit, Supertech

दाम(रु/वर्ग फुट)
3500

Knowledge Partner: PROPEQUITY

PROPEQUITY

प्रॉपर्टी की सारी जानकारी

PROPERTY डेटा

7:26 / 13:25

Yamuna Expressway - In News. Place to Invest



<https://www.youtube.com/watch?v=ArilmcQYJX0&t=53s>



https://www.youtube.com/watch?v=9r_VNm42ig&t=475s

Yamuna Expressway Supertech Golf Country

100 Acre Low Density Project 9 Hole World Class Golf Course By Graham Cooke



- Plots
- Villas
- Golf Course
- Group Housing
- Club House
- Commercial Area
- Indoor Sports Area
- Kids Playing Area
- School and Medical Facility
- Future Development

Yamuna Expressway Supertech UpCountry

100 Acre NCR 1st Beachside Homes



- Plotted Development
- Villa
- Group Housing
- Club House
- Swimming pool & Beach Pool
- School and Commercial Area
- Future Development

Yamuna Expressway - Thank u



Note:

Do not float or share the presentation with any customer. This is for sales team training use only.
The Information in the presentation has been taken from google and various articles for reference. If you have any suggestions please let us know.